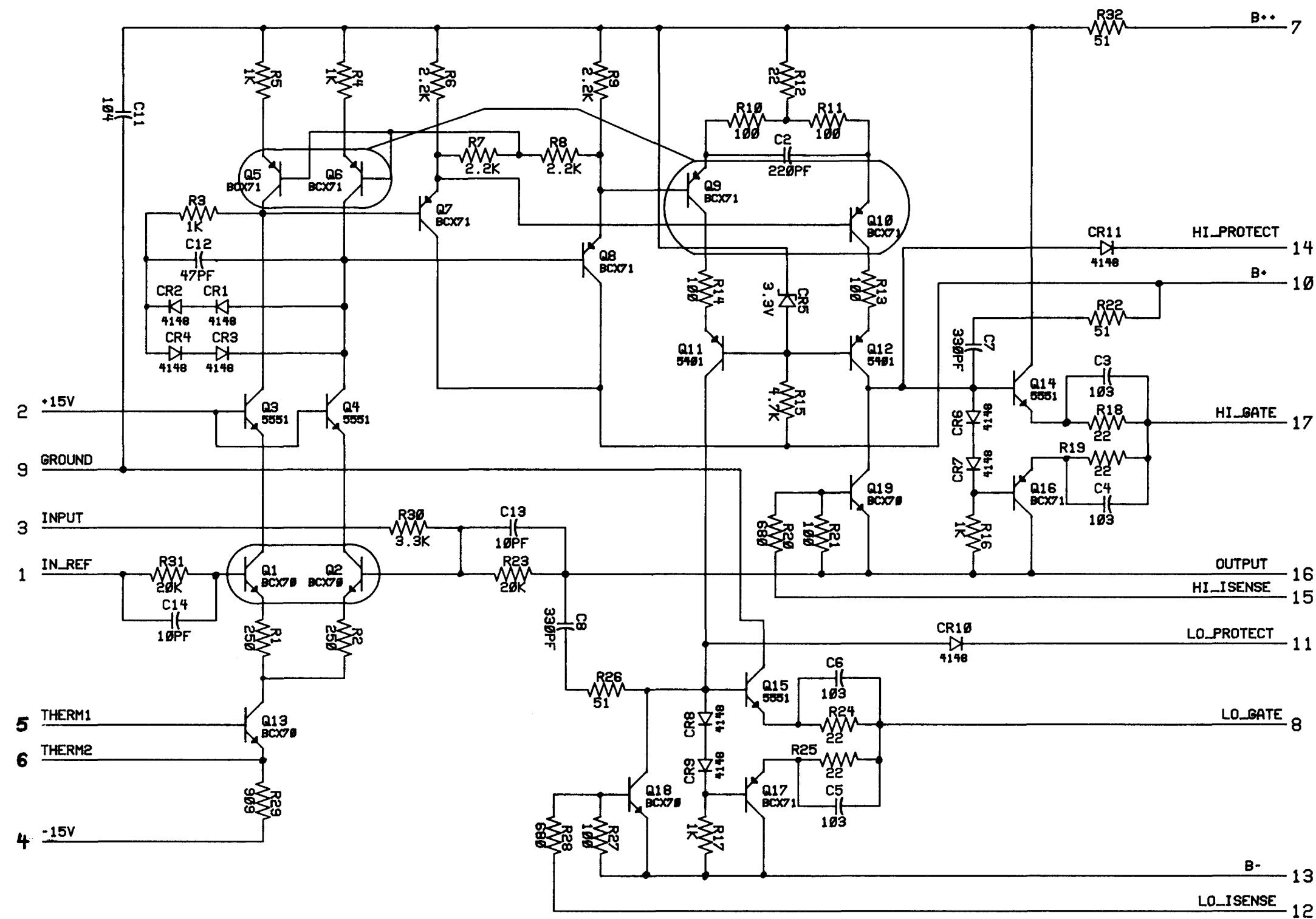


FINAL PRINT
 Date 11-9-90
 Approval *J. P. [Signature]*

ROCKFORD CORPORATION 613 S. ROCKFORD DR TEMPE, AZ 85281			
TITLE: PUNCH INPUT MODULE			
SIZE C	DRAWN: JRF ENGR: JRF	DRAWING NUMBER PIM-1SCH-PIM	REV. B
SCALE:	DATE: 11/6/89	SHEET 1 OF 1	



FINAL PRINT

Date 11-7-90

Approval *J. P. [Signature]*

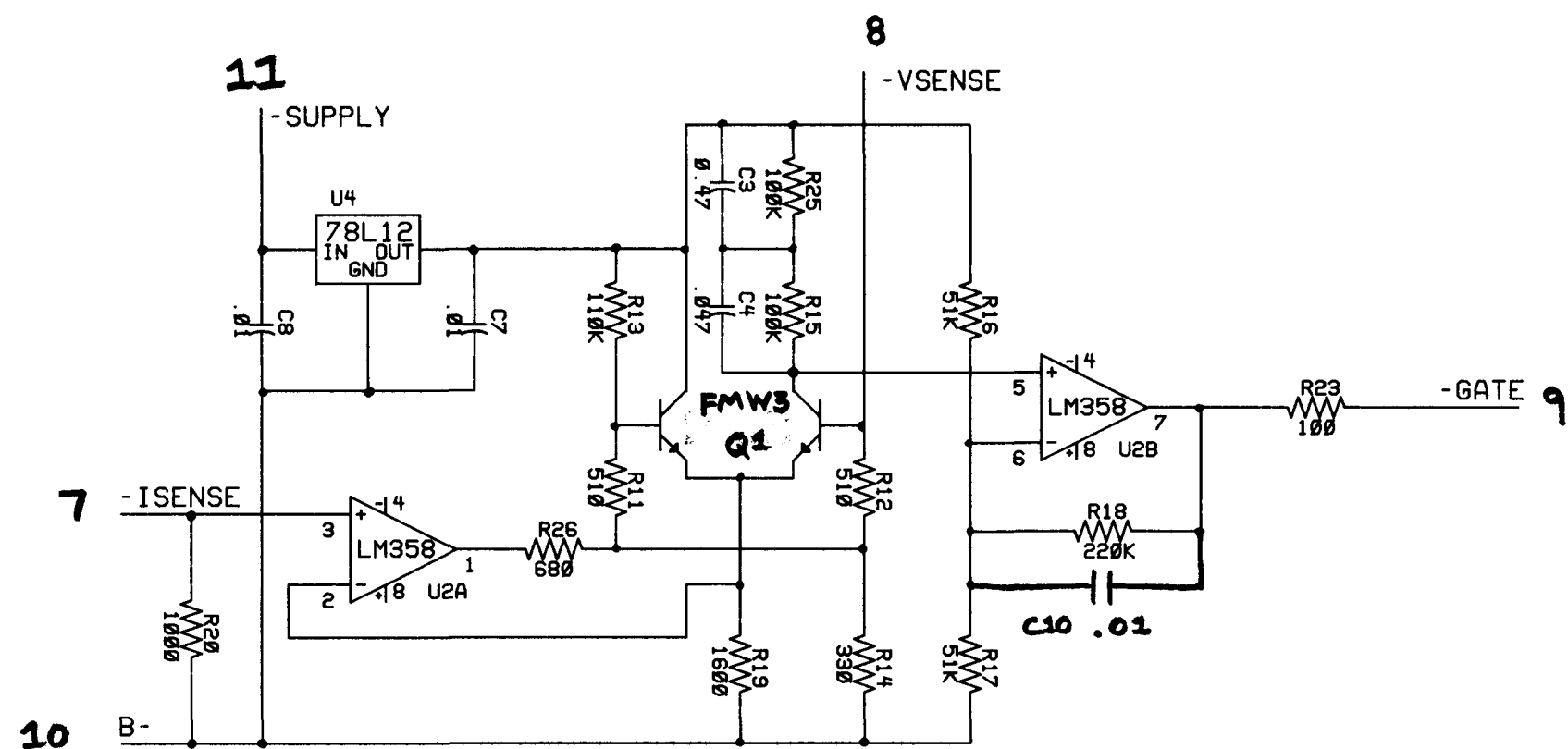
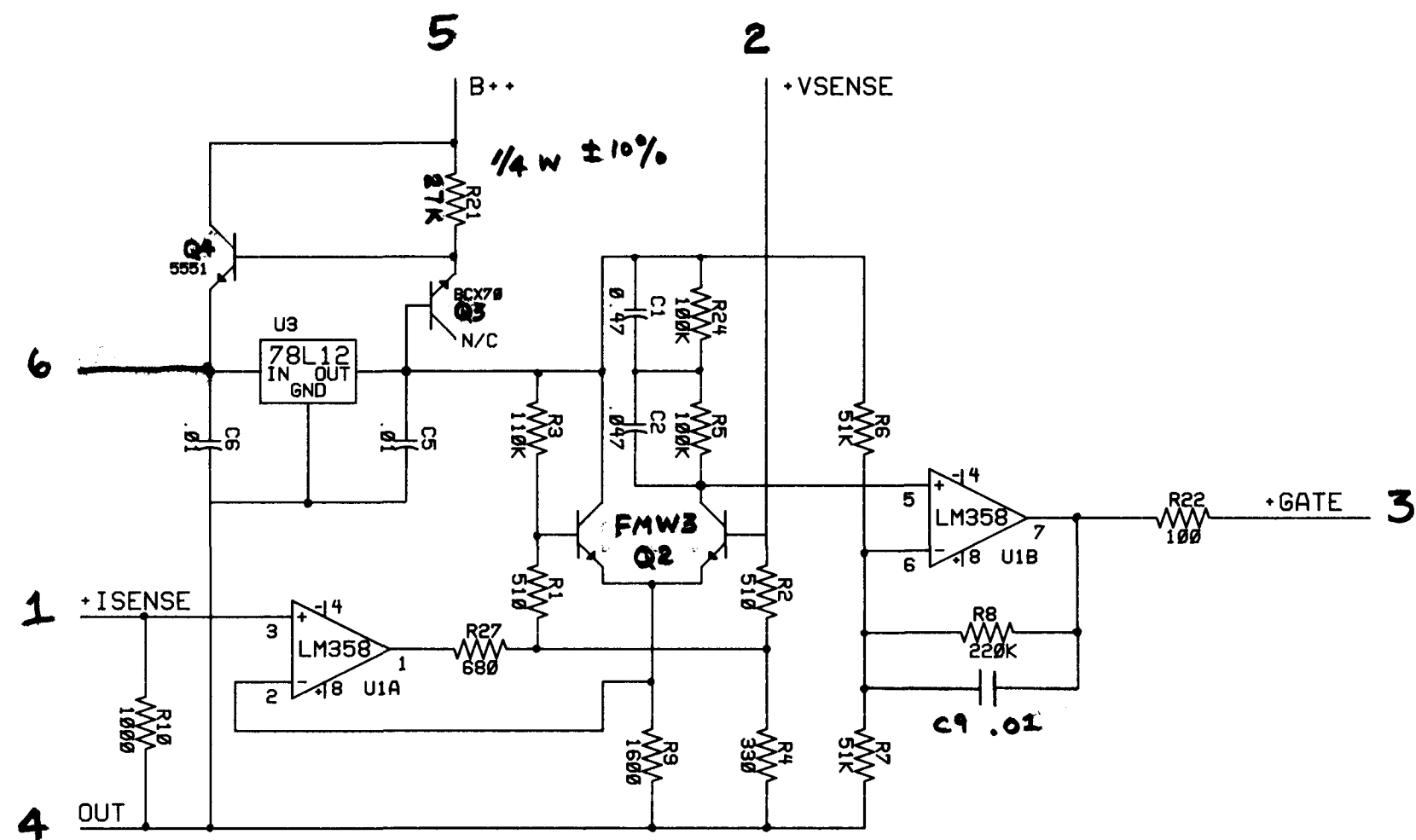
ROCKFORD CORPORATION
613 S. ROCKFORD DR TEMPE, AZ 85281

TITLE: PUNCH AMP MODULE

SIZE	DRAWN: JRF	DRAWING NUMBER	REV.
C	ENGR: JJP	PAM-1 SCH-POM	A

SCALE: DATE: 10/20/89 SHEET

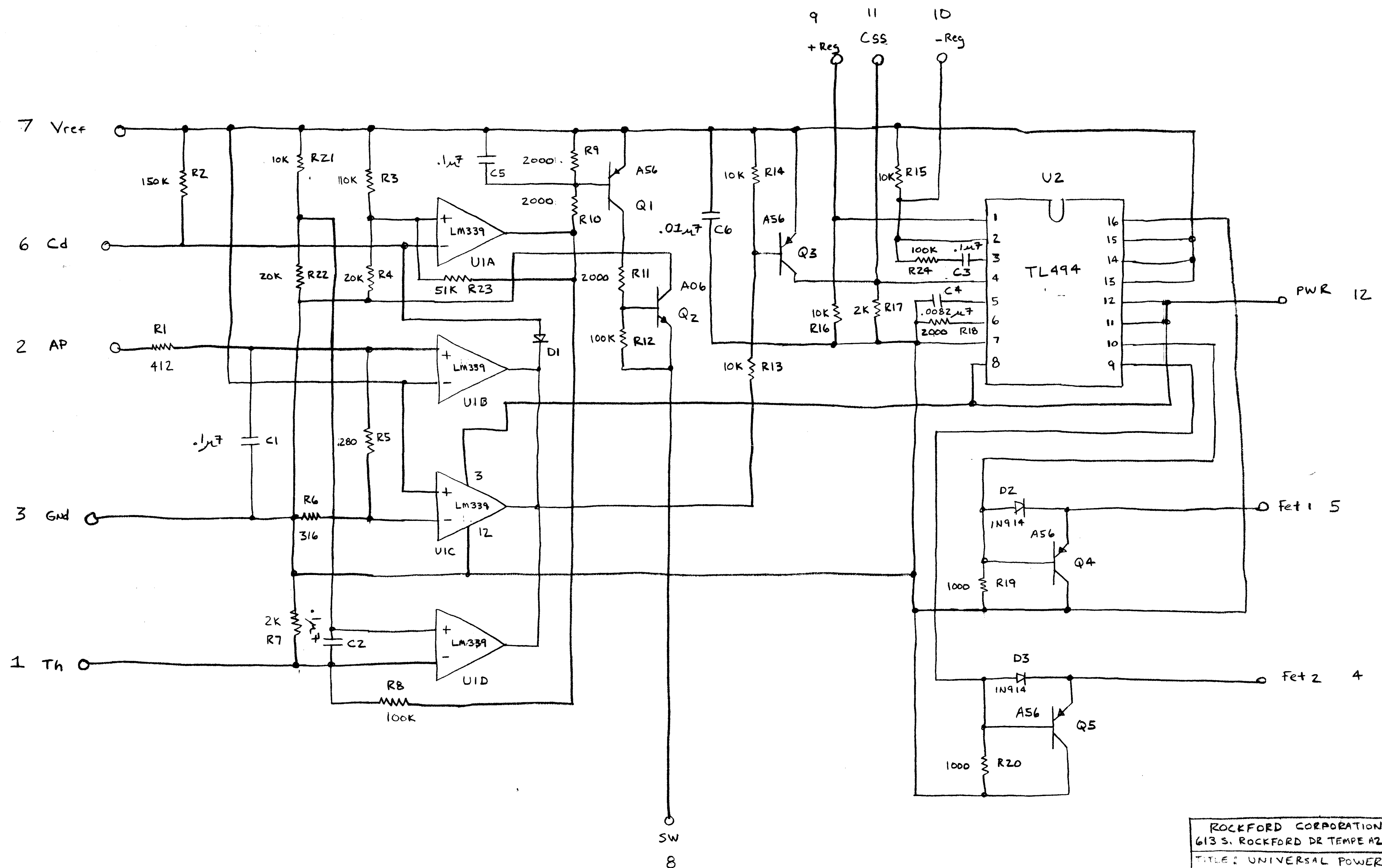
VSENSE RESISTOR -> $((B+) - 1) * 100K$
 0.1 V AT ISENSE -> THRESHOLD
 TIME CONSTANTS FOR BUZ11: 50 MS, 5 MS



FINAL PRINT

Date 11-7-90
 Approval *J. Ph...*

ROCKFORD CORPORATION			
613 S. ROCKFORD DR TEMPE, AZ 85281			
TITLE: PUNCH PROTECT MODULE 1			
SIZE	DRAWN:	DRAWING NUMBER	REV.
C	ENGR: JRF	PPM 1SCH-PPM	B
SCALE:		DATE: 9/29/89	SHEET 1 of 1



FINAL PRINT
 Date 11-7-90
 Approval *J. Clutz*

ROCKFORD CORPORATION 613 S. ROCKFORD DR TEMPE AZ,			
TITLE: UNIVERSAL POWER SUPPLY MODULE 1			
C	DRAWN: JJP	DRAWING NO.	REV
	ENGR: JJP	SCH-PWM	A
SCALE:		10/4/89	SHEET 10/1