

DRAWING REVISION RECORD			
REV	DESCRIPTION	DATE	APPROVED
A	PRODUCT RELEASE	3/4/04	J L J
B	ECO# AZ6992	3/9/04	J L J
C	ECO# AZ7085	4.28.04	DB
D	ECO# AZ7230	9/10/04	D H
E	ECO# AZ7365 ADDED (R76) RM/4-000C	1/13/05	D H
F	ECO# 7658	8/26/05	R.G
G	ECO# 7663	9/6/05	R.G
H	ECO# 7702	1/30/06	D H

5. TESTPOINTS MEASURED WITH RESPECT TO GROUND WITH A DVM  
MEASUREMENTS MAY VARY +/- 20K

TEST CONDITIONS:  
VB+ = 13.8 VDC, XOVER SET TO ALL PASS, GAIN SET TO MINIMUM.  
REMOTE BASS BOOST NOT CONNECTED, LOGO ASSEMBLY CONNECTED.  
DC TEST POINTS MEASURED WITH NO INPUT SIGNAL.  
AC TEST POINTS MEASURED WITH 500 mVAC 1kHz UNBALANCED SINE  
WAVE AT INPUT JACK. 2 OHM LOAD PER CHANNEL AT OUTPUT  
CONNECTOR.

6. MAXIMUM OUTPUT TEST CONDITIONS:  
VB+ = 14.4 VDC, XOVER SET TO ALL PASS, GAIN SET TO MINIMUM.  
REMOTE BASS BOOST NOT CONNECTED, LOGO ASSEMBLY CONNECTED.  
??? VAC 1kHz SINE WAVE AT INPUT JACK, 2 OHM LOAD PER  
CHANNEL AT OUTPUT CONNECTOR.  
VOUT = 7777 VAC, POWER OUT = 777 W/CHANNEL  
THD+N <= 27.7%, 10Hz - 22kHz FILTERED.

7. ALL CAPACITORS 20% TOLERANCE.  
8. ALL RESISTORS IN OHMS, 1% TOLERANCE.  
9. THIS SCHEMATIC IS FOR THE FOLLOWING PCB ASSEMBLIES: WP-4892  
1. THIS SCHEMATIC IS FOR THE FOLLOWING PCB FABRICATION: PC-4892  
NOTES: (UNLESS OTHERWISE SPECIFIED)

ROCKFORD  
FOSGATE DIVISION

CORPORATION  
TEMPE, AZ

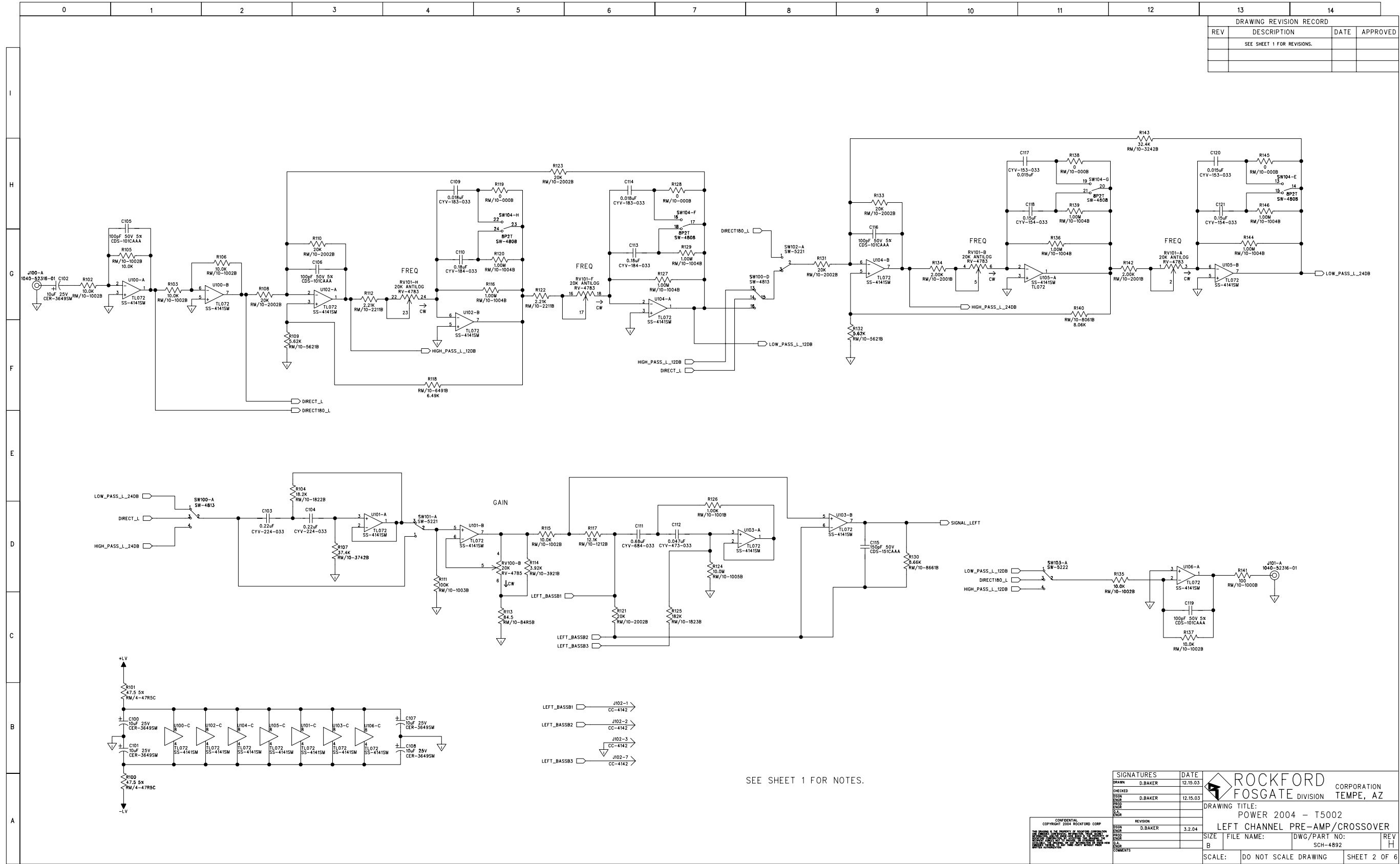
DRAWN: D.BAKER  
CHECKED: D.BAKER  
DESIGN: D.BAKER  
DATE: 12.15.03

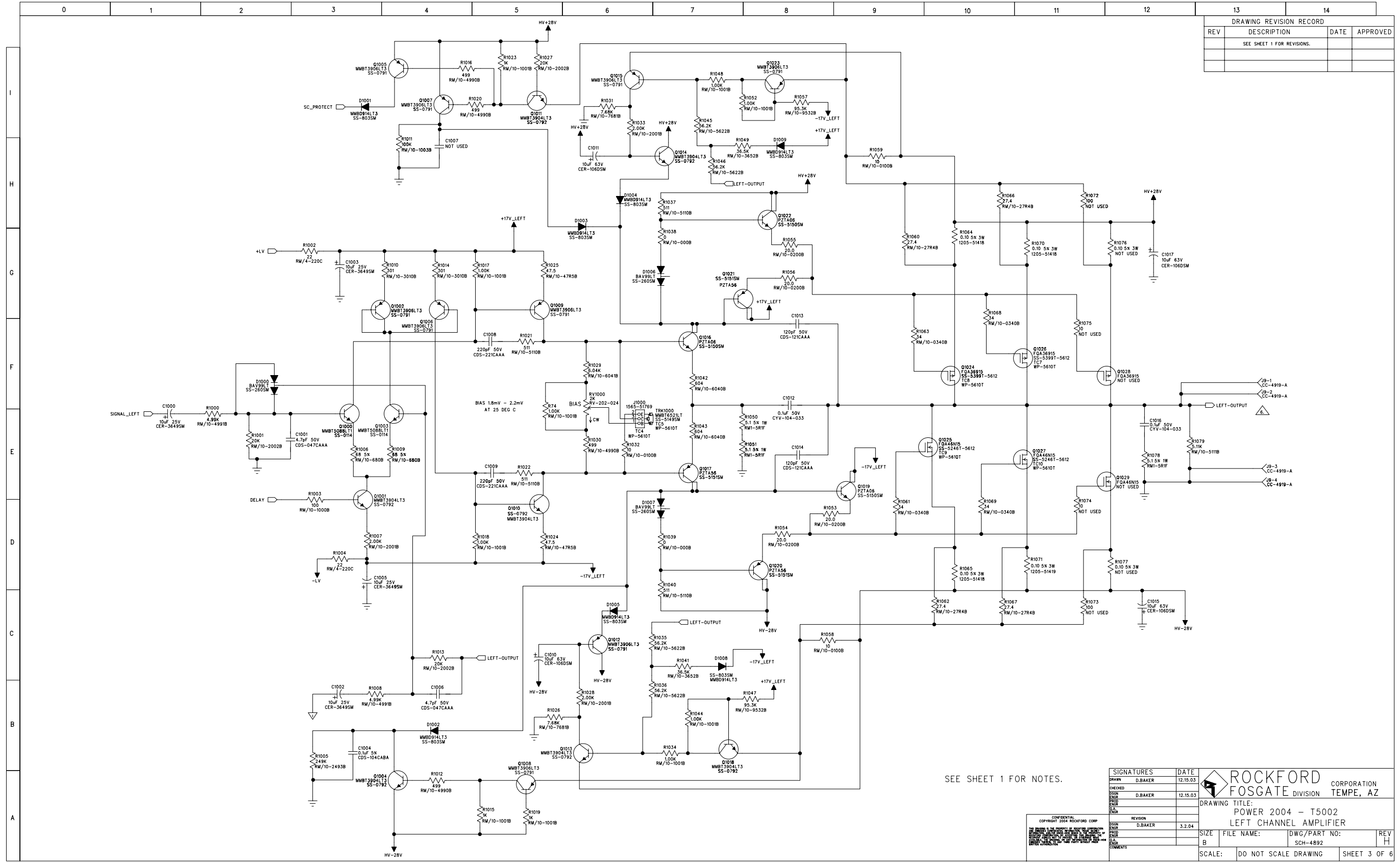
REVISION  
D.BAKER  
3.2.04

DRAWING TITLE:  
POWER 2004 - T5002  
POWER SUPPLY

SIZE: B  
FILE NAME: SCH-4892-M.SCH  
DWG/PART NO: SCH-4892  
REV: H

SCALE: DO NOT SCALE DRAWING  
SHEET 1 OF 6





DRAWING REVISION RECORD			
REV	DESCRIPTION	DATE	APPROVED
	SEE SHEET 1 FOR REVISIONS.		

SEE SHEET 1 FOR NOTES.

SIGNATURES

DATE

DRAWN

D.BAKER

12.15.03

CHECKED

D.BAKER

12.15.03

DESIGN

D.BAKER

12.15.03

REVISION

D.BAKER

3.2.04

COMMENTS

ROCKFORD FOSGATE DIVISION

CORPORATION TEMPE, AZ

DRAWING TITLE:

POWER 2004 - T5002

LEFT CHANNEL AMPLIFIER

FILE NAME:

DWG/PART NO:

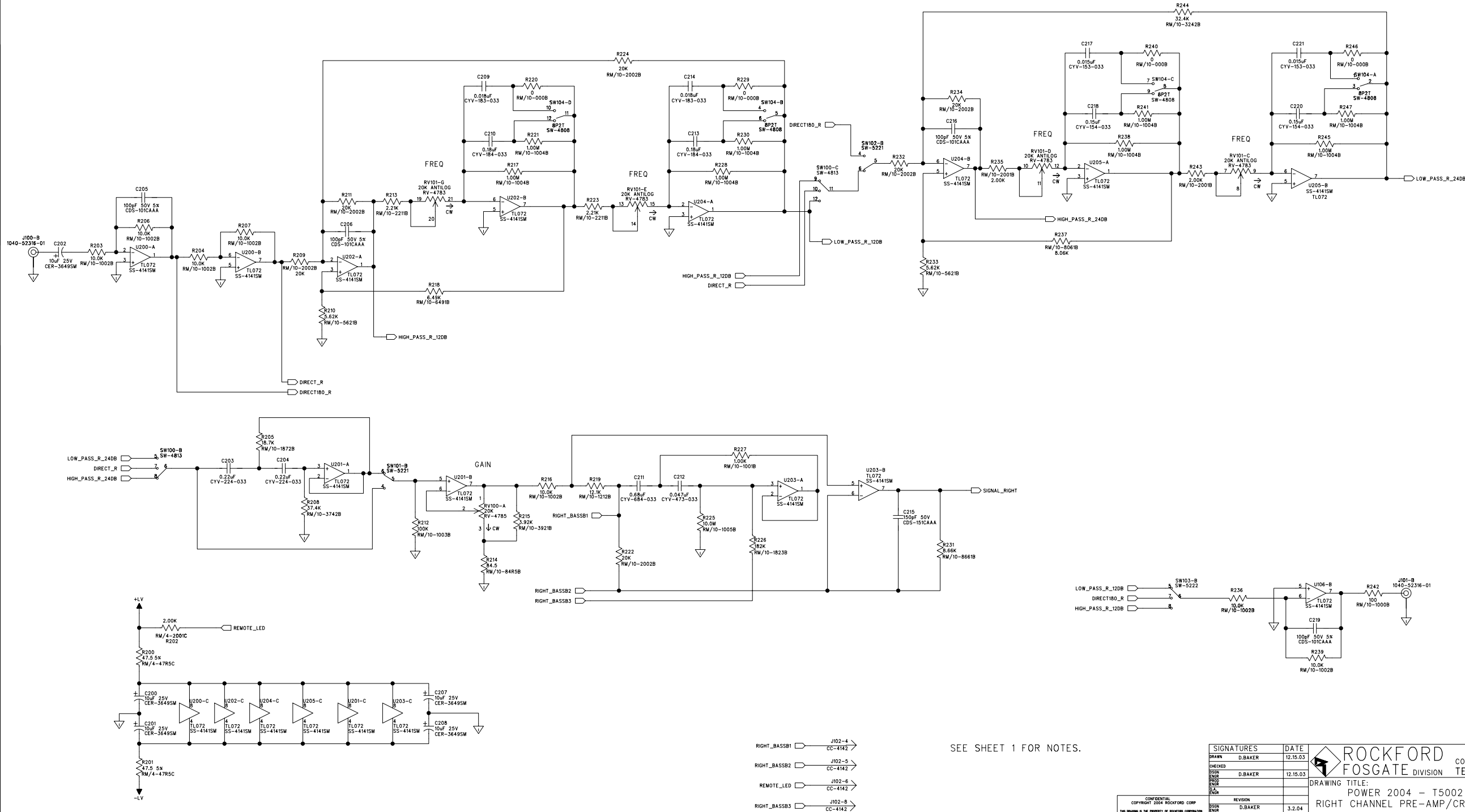
SCH-4892

SCALE:


DO NOT SCALE DRAWING

SHEET 3 OF 6

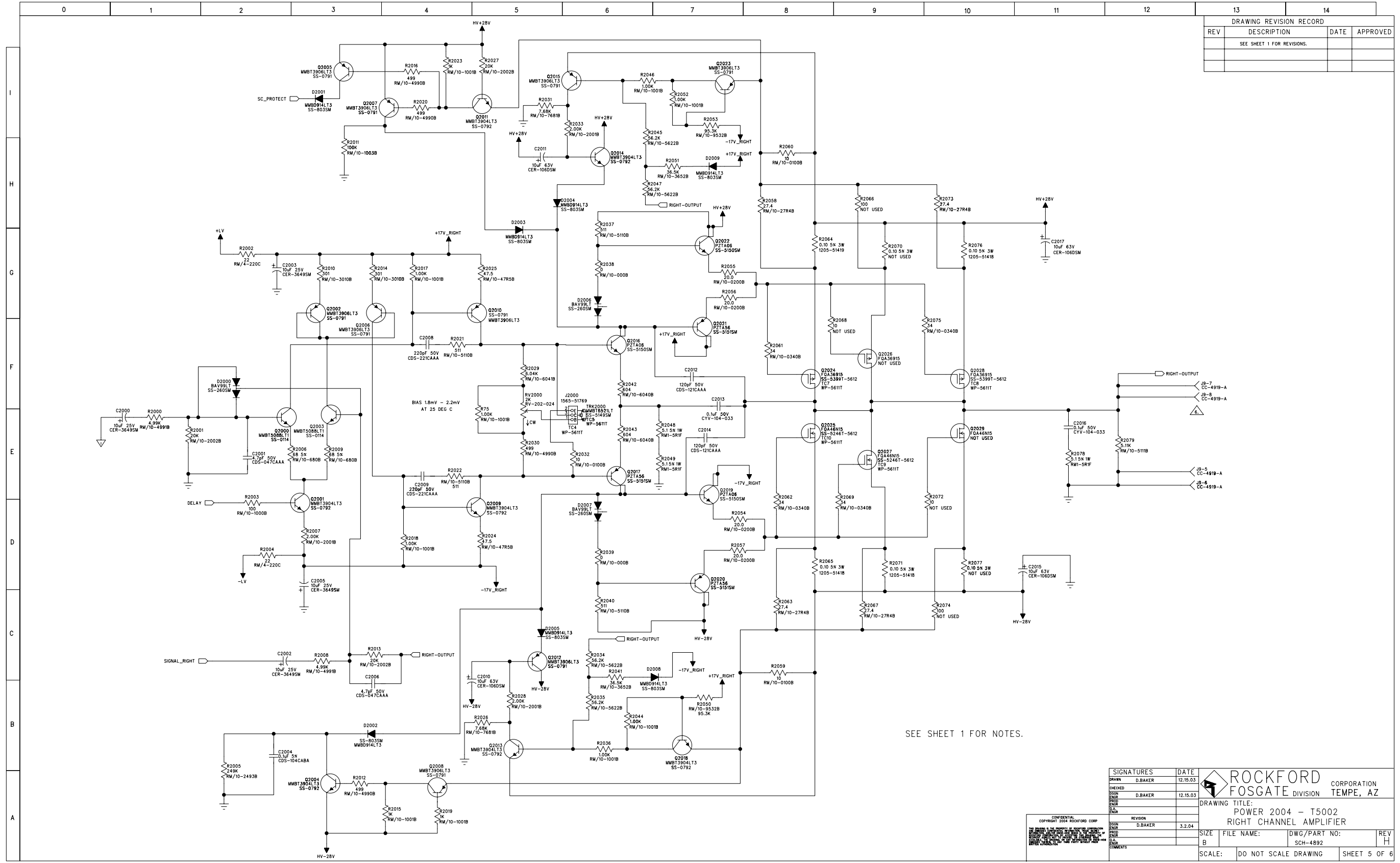
DRAWING REVISION RECORD			
REV	DESCRIPTION	DATE	APPROVED
	SEE SHEET 1 FOR REVISIONS.		



SEE SHEET 1 FOR NOTES.

SIGNATURES		DATE		 <b>ROCKFORD FOSGATE</b>		CORPORATION	
DRAWN D.BAKER		12.15.03		DIVISION		TEMPE, AZ	
CHECKED				DRAWING TITLE: POWER 2004 - T5002 RIGHT CHANNEL PRE-AMP/CROSSOVER			
DESIGN							
INSTR							
D.BAKER		12.15.03					
DATE							
REVISION							
DESIGN							
INSTR							
D.BAKER		3.2.04					
DATE							
COMMENTS							

SIZE	FILE NAME:	DWG/PART NO:	REV
B		SC#-4892	H
SCALE:	DO NOT SCALE	DRAWING	SHEET 4 OF 4



DRAWING REVISION RECORD			
REV	DESCRIPTION	DATE	APPROVED
	SEE SHEET 1 FOR REVISIONS.		

SEE SHEET 1 FOR NOTES.

DRAWN

D.BAKER

12.15.03

CHECKED

D.BAKER

12.15.03

DESIGN

D.BAKER

12.15.03

ENGR

D.BAKER

12.15.03

QA

D.BAKER

12.15.03

COMMENTS

DATE

12.15.03

REVISION

3.2.04

FILE NAME:

DWG/PART NO:

SCH-4892

SCALE:

DO NOT SCALE DRAWING

REV

H

SHEET

5 OF 6

CONFIDENTIAL

COPYRIGHT 2004 ROCKFORD CORP

POWER 2004 - T5002

RIGHT CHANNEL AMPLIFIER

ROCKFORD FOSGATE CORPORATION

TEMPE, AZ

	0	1	2	3	4	5	6	7	8	9	10	11	12	13	14		
														DRAWING REVISION RECORD			
														REV	DESCRIPTION	DATE	APPROVED
															SEE SHEET 1 FOR REVISIONS.		
I																	
H																	
G																	
F																	
E																	
D																	
C																	
B																	
A																	

FD1

•

FD2

•

FD3

•

✕

FD1

⊙

X1

MT7

MT8

MT9

MT10

MT11

MT12

MT13

MT14

P1

P2

P3

P4

P5

P6

P7

P8

P9

P10

P11

P12

P13

P14

P15

P16

P17

P18

P19

P20

P21

P22

P23

P24

P25

P26

P27

P28

P29

P30

P31

SEE SHEET 1 FOR NOTES.

CONFIDENTIAL  
COPYRIGHT 2004 ROCKFORD CORP

DO NOT SCALE DRAWING

SIGNATURES

DATE

DRAWN

CHECKED

DESIGN

ENG

PROD

QA

ENGR

REVISION

DATE

SIZE

FILE NAME:

DWG/PART NO:

REV

ROCKFORD  
FOSGATE DIVISION

CORPORATION  
TEMPE, AZ

DRAWING TITLE:

POWER 2004 - T5002  
MISCELLANEOUS PCB ITEMS

SCH-4892

SHEET 6 OF 6