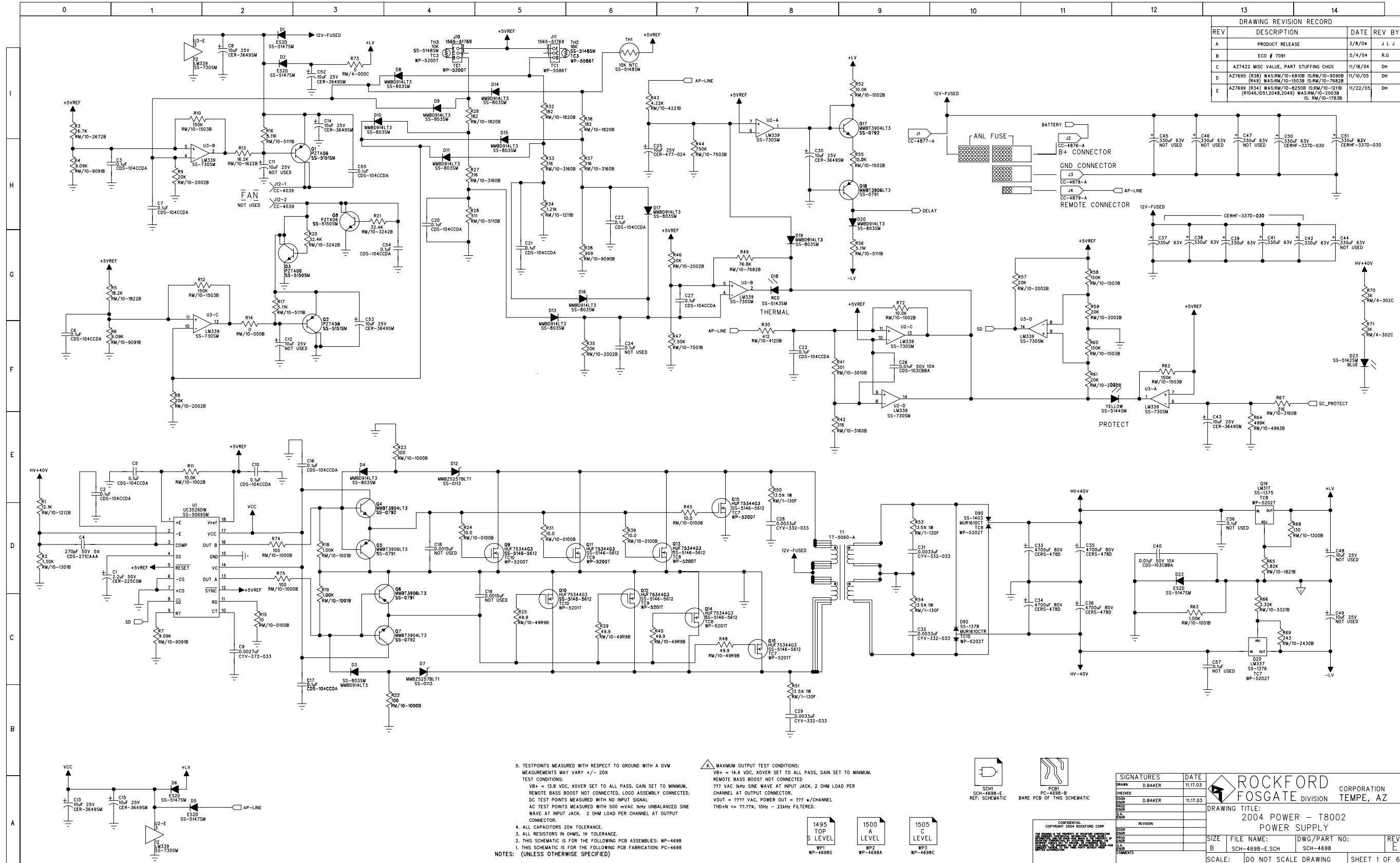
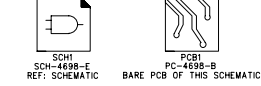


DRAWING REVISION RECORD			
REV	DESCRIPTION	DATE	REV BY
A	PRODUCT RELEASE	3/8/04	J L J
B	ECO # 7091	5/4/04	R.G
C	AZ7422 MISC VALUE, PART STUFFING CHGS	11/18/04	DH
D	AZ7695 (R38) WAS:RM/10-6810B IS:RM/10-9090B (R49) WAS:RM/10-1503B IS:RM/10-7682B	11/10/05	DH
E	AZ7699 (R34) WAS:RM/10-8250B IS:RM/10-1211B (R1046,1051,2048,2049) WAS:RM/10-2001B IS: RM/10-1763B	11/22/05	DH

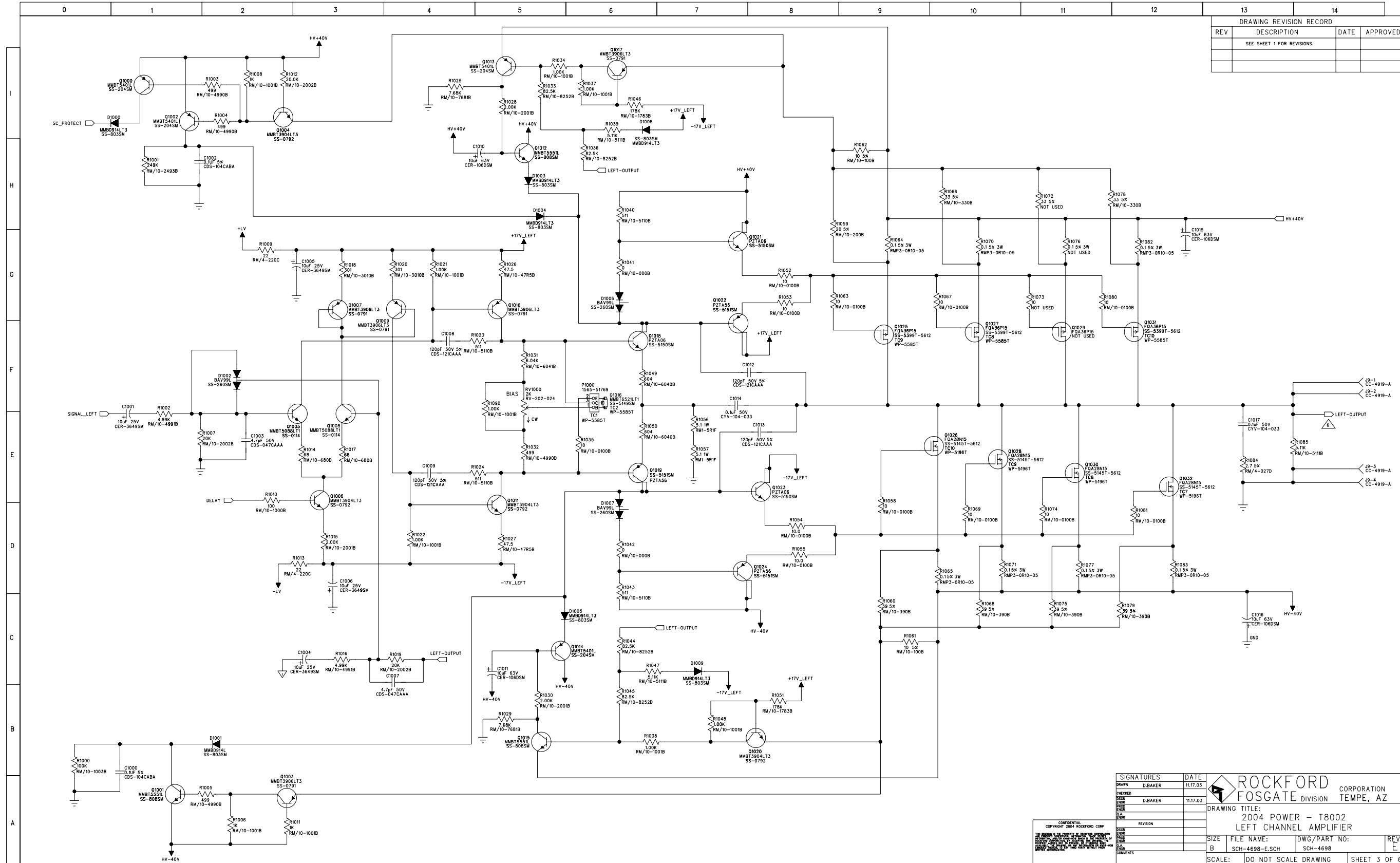


5. TESTPOINTS MEASURED WITH RESPECT TO GROUND WITH A DVM MEASUREMENTS MAY VARY +/- 20%
 TEST CONDITIONS:
 YB+ = 13.8 VDC, XOVER SET TO ALL PASS, GAIN SET TO MINIMUM, REMOTE BASS BOOST NOT CONNECTED, LOGO ASSEMBLY CONNECTED.
 DC TEST POINTS MEASURED WITH NO INPUT SIGNAL
 AC TEST POINTS MEASURED WITH 500 mVAC 1kHz UNBALANCED SINE WAVE AT INPUT JACK. 2 OHM LOAD PER CHANNEL AT OUTPUT CONNECTOR.
 4. ALL CAPACITORS 20% TOLERANCE.
 3. ALL RESISTORS IN OHMS, 1% TOLERANCE.
 2. THIS SCHEMATIC IS FOR THE FOLLOWING PCB ASSEMBLIES: WP-4698
 1. THIS SCHEMATIC IS FOR THE FOLLOWING PCB FABRICATION: PC-4698
 NOTES: (UNLESS OTHERWISE SPECIFIED)



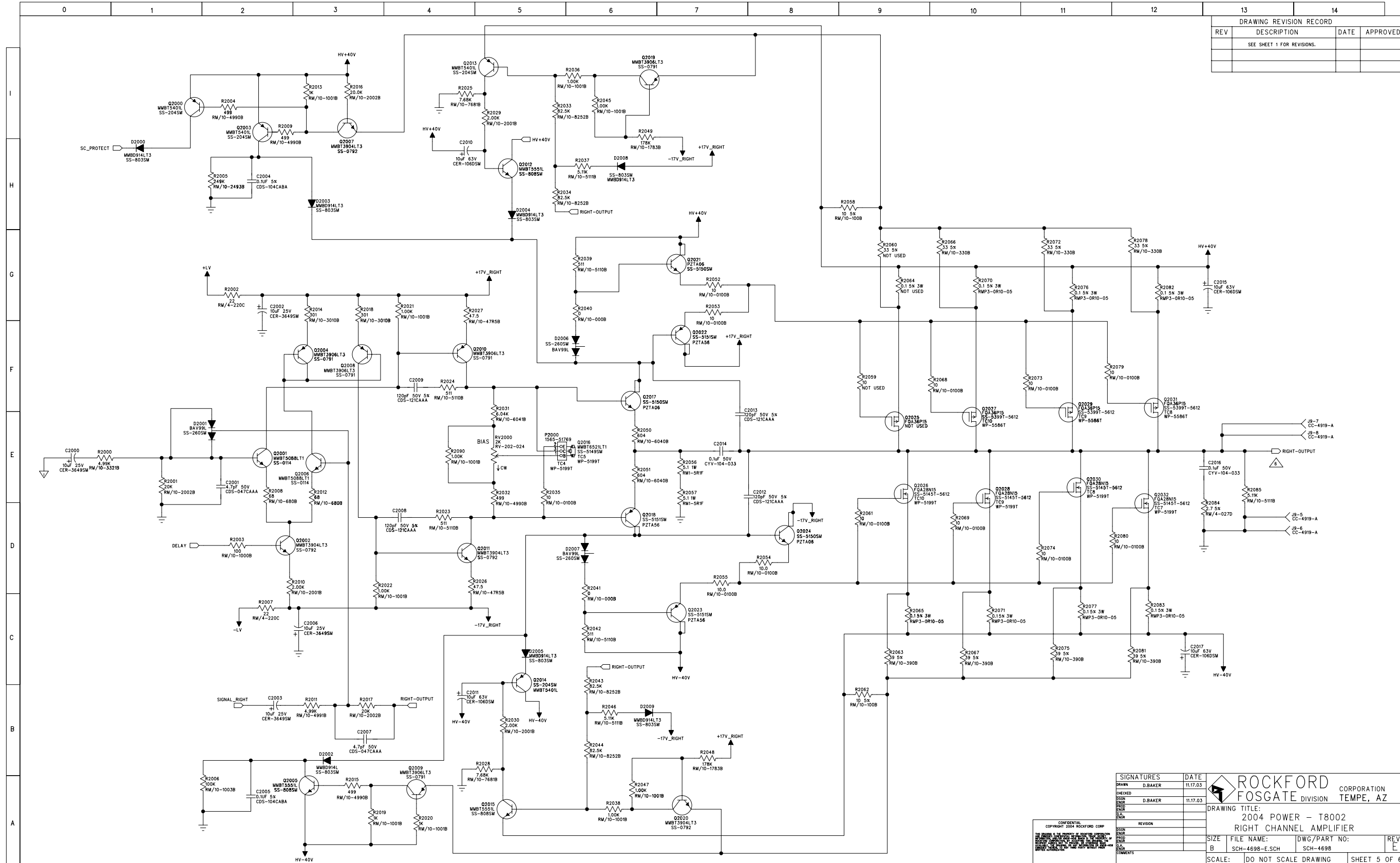
SIGNATURES		DATE	 ROCKFORD FOSGATE DIVISION CORPORATION TEMPE, AZ
DRAWN	D.BAKER	11.17.03	
CHECKED			
DESIGNED	D.BAKER	11.17.03	
DATE			
BY			
REVISION			
DRAWING TITLE:			2004 POWER - T8002
POWER SUPPLY			
SIZE	FILE NAME:	DWG/PART NO:	REV
B	SCH-4698-E.SCH	SCH-4698	E
SCALE:	DO NOT SCALE DRAWING	SHEET 1 OF 6	

DRAWING REVISION RECORD			
REV	DESCRIPTION	DATE	APPROVED
	SEE SHEET 1 FOR REVISIONS.		



SIGNATURES		DATE	 ROCKFORD FOSGATE DIVISION CORPORATION TEMPE, AZ			
DRAWN	D.BAKER	11.17.03				
CHECKED	D.BAKER	11.17.03	DRAWING TITLE: 2004 POWER - T8002 LEFT CHANNEL AMPLIFIER			
DESIGN	D.BAKER	11.17.03				
DATE			SIZE	FILE NAME	DWG/PART NO:	REV
			B	SCH-4698-E.SCH	SCH-4698	E
			SCALE:	DO NOT SCALE DRAWING	SHEET 3 OF 6	

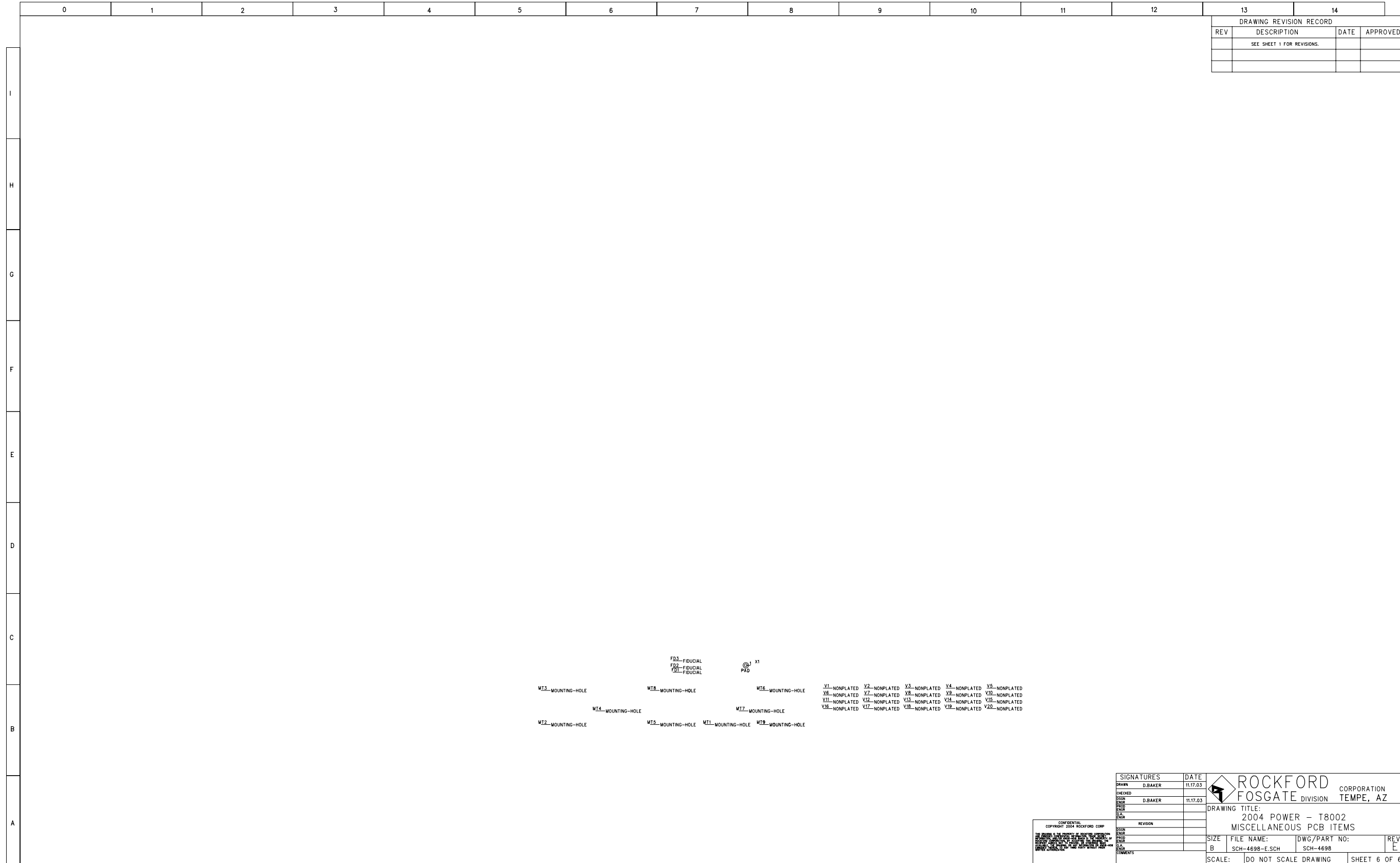
DRAWING REVISION RECORD			
REV	DESCRIPTION	DATE	APPROVED
	SEE SHEET 1 FOR REVISIONS.		



SIGNATURES		DATE	 ROCKFORD FOSGATE DIVISION CORPORATION TEMPE, AZ			
DRAWN	D.BAKER	11.17.03				
CHECKED			DRAWING TITLE: 2004 POWER - T8002 RIGHT CHANNEL AMPLIFIER			
DESIGN	D.BAKER	11.17.03				
FILED			SIZE	FILE NAME:	DWG/PART NO:	REV
			B	SCH-4698-E.SCH	SCH-4698	E
SCALE:			DO NOT SCALE DRAWING		SHEET 5 OF 6	

CONFIDENTIAL
 COPYRIGHT 2004 ROCKFORD CORP

DRAWING REVISION RECORD			
REV	DESCRIPTION	DATE	APPROVED
	SEE SHEET 1 FOR REVISIONS.		



SIGNATURES		DATE	ROCKFORD FOSGATE DIVISION CORPORATION TEMPE, AZ
DRAWN	D.BAKER	11.17.03	
CHECKED			DRAWING TITLE: 2004 POWER - T8002 MISCELLANEOUS PCB ITEMS
DESIGN	D.BAKER	11.17.03	
DATE			SIZE FILE NAME: DWG/PART NO: REV B SCH-4698-E.SCH SCH-4698 E
REVISION			
SCALE: DO NOT SCALE DRAWING			SHEET 6 OF 6

CONFIDENTIAL
 COPYRIGHT 2004 ROCKFORD CORP