

**Pioneer**

**Service  
Manual**



GM-D9605/XEEL

ORDER NO.  
**CRT5800**

**BRIDGEABLE FOUR-CHANNEL POWER AMPLIFIER**

**GM-D9605** / XEEL



**PIONEER CORPORATION** 1-1, Shin-ogura, Saiwai-ku, Kawasaki-shi, Kanagawa 212-0031, Japan  
**PIONEER ELECTRONICS (USA) INC.** P.O. Box 1760, Long Beach, CA 90801-1760, U.S.A.  
**PIONEER EUROPE NV** Haven 1087, Keetberglaan 1, 9120 Melsele, Belgium  
**PIONEER ELECTRONICS ASIACENTRE PTE. LTD.** 253 Alexandra Road, #04-01, Singapore 159936  
©PIONEER CORPORATION 2015

K-ZZZ OCT. 2015 Printed in Japan

# SAFETY INFORMATION

## CAUTION

This service manual is intended for qualified service technicians; it is not meant for the casual do-it-yourselfer. Qualified technicians have the necessary test equipment and tools, and have been trained to properly and safely repair complex products such as those covered by this manual. Improperly performed repairs can adversely affect the safety and reliability of the product and may void the warranty. If you are not qualified to perform the repair of this product properly and safely, you should not risk trying to do so and refer the repair to a qualified service technician.

## WARNING

This product may contain a chemical known to the State of California to cause cancer, or birth defects or other reproductive harm.  
Health & Safety Code Section 25249.6 - Proposition 65

**Where in a manufacturer's service documentation, for example in circuit diagrams or lists of components, a symbol is used to indicate that a specific component shall be replaced only by the component specified in that documentation for safety reasons, the following symbol shall be used:**



# CONTENTS

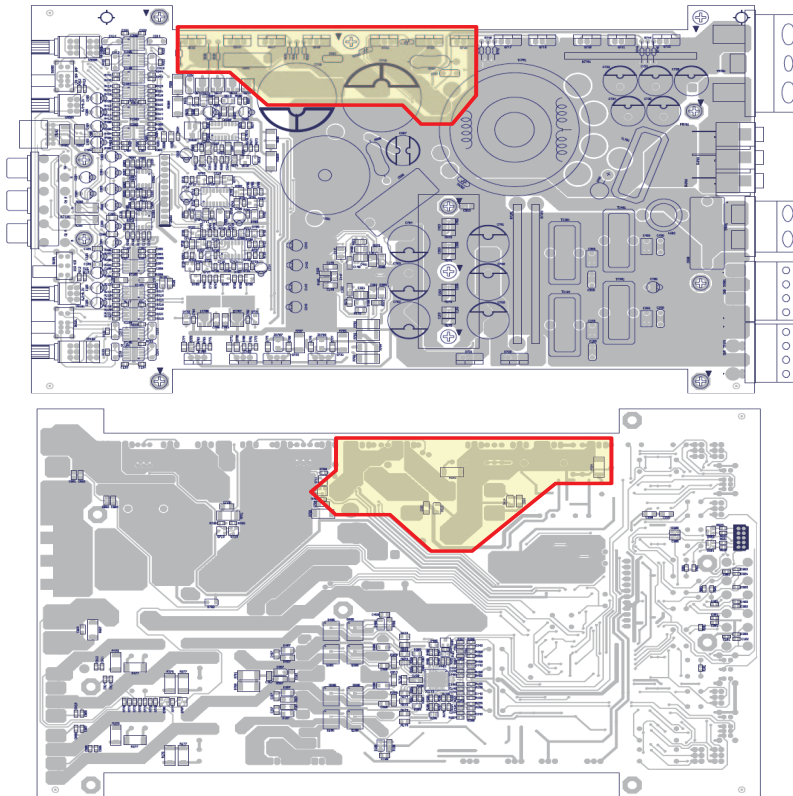
SAFETY INFORMATION .....	2
1. SERVICE PRECAUTIONS .....	3
1.1 SAFETY PRECAUTIONS .....	3
1.2 NOTES ON DISASSEMBLY / ASSEMBLY .....	3
1.3 NOTES ON REPLACING PARTS .....	4
1.4 NOTES ON ADJUSTMENT .....	5
1.5 OTHERS .....	5
2. SPECIFICATIONS .....	5
2.1 SPECIFICATIONS .....	5
3. BASIC ITEMS FOR SERVICE .....	6
3.1 CHECK POINTS AFTER SERVICING .....	6
3.2 JIGS LIST .....	6
4. BLOCK DIAGRAM .....	7
5. DIAGNOSIS .....	8
5.1 CONNECTOR FUNCTION DESCRIPTION .....	8
5.2 OPERATIONAL FLOWCHART .....	9
6. SERVICE MODE .....	10
7. DISASSEMBLY .....	10
8. ADJUSTMENT .....	
8.1 ADJUSTMENT REQUIRED WHEN THE UNIT IS REPLACED .....	11
8.2 SUB WOOFER POWER AMP OVERCURRENT ADJUSTMENT .....	11
9. EXPLODED VIEWS AND PARTS LIST .....	12
9.1 PACKING .....	12
9.2 EXTERIOR .....	14
10. SCHEMATIC DIAGRAM .....	16
10.1 MAIN PCBA (AL/AR and BL/BR ch PART) .....	16
10.2 MAIN PCBA (OUTPUT PART) .....	17
10.3 MAIN PCBA (SW channel), SUB PCBA .....	18
10.4 MAIN PCBA (POWER PART) .....	19
11. PCB CONNECTION DIAGRAM .....	20
11.1 MAIN PCBA .....	20
11.2 SUB PCBA .....	22
12. ELECTRICAL PARTS LIST .....	23

# 1. SERVICE PRECAUTIONS

## 1.1 SAFETY PRECAUTIONS



- You should conform to the regulations governing the product (safety, radio and noise, and other regulations), and should keep the safety during servicing by following the safety instructions described in this manual.
- Please be aware of high voltage area marked in red box as follows.



## 1.2 NOTES ON DISASSEMBLY / ASSEMBLY

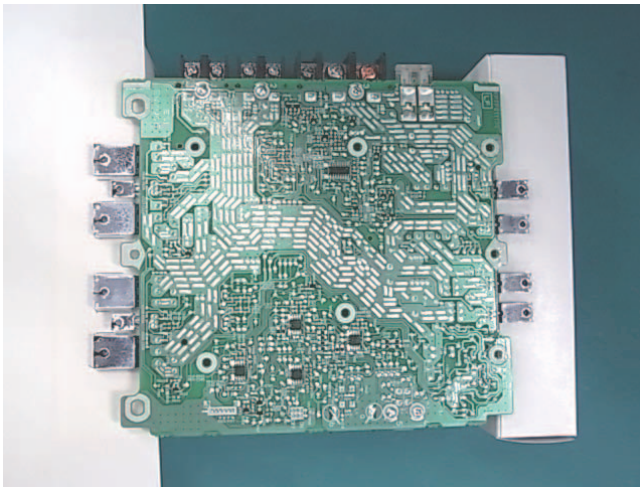
- Before disassembling the unit, be sure to turn off the power. Unplugging and plugging the connectors during power-on mode may damage the ICs inside the unit.
- Please be sure to conduct line process to original status if you make assembling after repair.

# 1.3 NOTES ON REPLACING PARTS

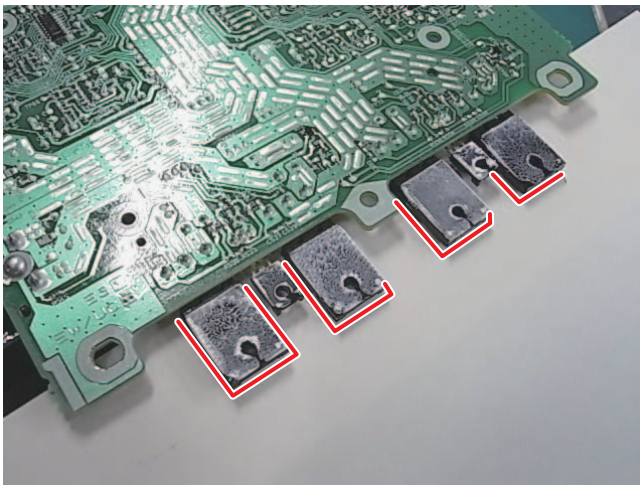
- Be careful in handling ICs. Some ICs such as MOS type are so fragile that they can be damaged by electrostatic induction.
- Please attach the Sheet between Power Transistor and Heat Sink when you place Power Transistor in Heat Sink. If the Sheet is not attached between Power Transistor and Heat Sink, Power Transistor might be damaged.
- When you replace sheets (#9 (16170201000) & #10 (16170201000) on the page 14), re-apply silicon grease (GEM1057) after wiping off silicon grease.
- The part listed below is difficult to replace as a discrete component part.  
When the part listed in the table is defective, replace whole Assy.

Unit Name	Ref No.	Part No.	Remarks
Amp Unit	IC113	IRS2093	There back heat pad
Amp Unit	Q105/106	IRF6775M	Special MOSFET
Amp Unit	Q205/206	IRF6775M	Special MOSFET
Amp Unit	Q305/306	IRF6775M	Special MOSFET
Amp Unit	Q405/406	IRF6775M	Special MOSFET

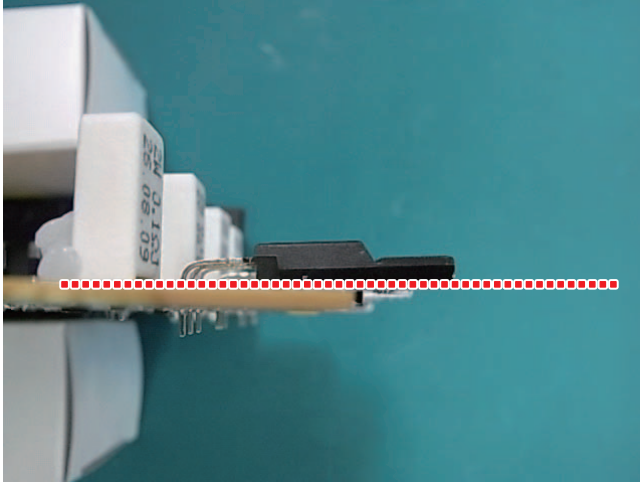
- When you replace a part fixed to the heatsink (Q515~518, Q716~718, Q720~722, D720~723, Q731, 732, IC703 and 704), adjust the position of the part according to the following procedure.



Put the Amp Unit on blocks.



Put a paper between the block and the Amp Unit, and outline transistors and diodes. Put a part to replace in the outline.



Align the bottom of a transistor or a diode with the top of the PC board, and solder it.  
Apply grease, GEM1057 to the back of the part.

Put a paper between the block and the Amp Unit, and outline transistors and diodes.  
Put a part to replace in the outline.

Note : Even if the unit shown in the photos and illustrations in this manual may differ from your product, the procedures described here are common.

- Apply the glue (TB1401B or TB1401M) onto screws fixing the PCB and holders. Screws may loosen if the glue is not applied.
- When you replace parts that are applied silicon glue, re-apply silicon glue to the same place after replacing.

## 1.4 NOTES ON ADJUSTMENT

- Some of the adjustment is required when the part is replaced.  
Please refer to "8. EACH SETTING AND ADJUSTMENT".

## 1.5 OTHERS

- For environmental protection, lead-free solder is used on the printed circuit boards mounted in this unit.  
Be sure to use lead-free solder and a soldering iron that can meet specifications for use with lead-free solders for repairs accompanied by reworking of soldering.

# 2. SPECIFICATIONS

## 2.1 SPECIFICATIONS

For all items except the backup current, refer to the Owner's Manual.

Backup current ..... 1 mA or less

# 3. BASIC ITEMS FOR SERVICE

## 3.1 CHECK POINTS AFTER SERVICING

To keep the product quality after servicing, please confirm following check points.

No.	Procedures	Item to be confirmed
1	Confirm whether the customer complain has been solved.	The customer complain must not be reappeared. Audio and operations must be normal.
2	Check the output sound.	Audio and operations must be normal.
3	Appearance check	No scratches or dirt on its appearance after receiving it for service.

See the table below for the items to be checked regarding audio:

Item to be checked regarding audio
Distortion
Noise
Volume too low
Volume too high
Volume fluctuating
Sound interrupted

## 3.2 JIGS LIST

### ● Jigs List

Name	Jig No.	Remarks
Bond	GYL1006	Applying to choke coil, resistor and capacitor
Bond	TB1401B or TB1401M	For fixing screws (Made by ThreeBond)

### ● Grease List

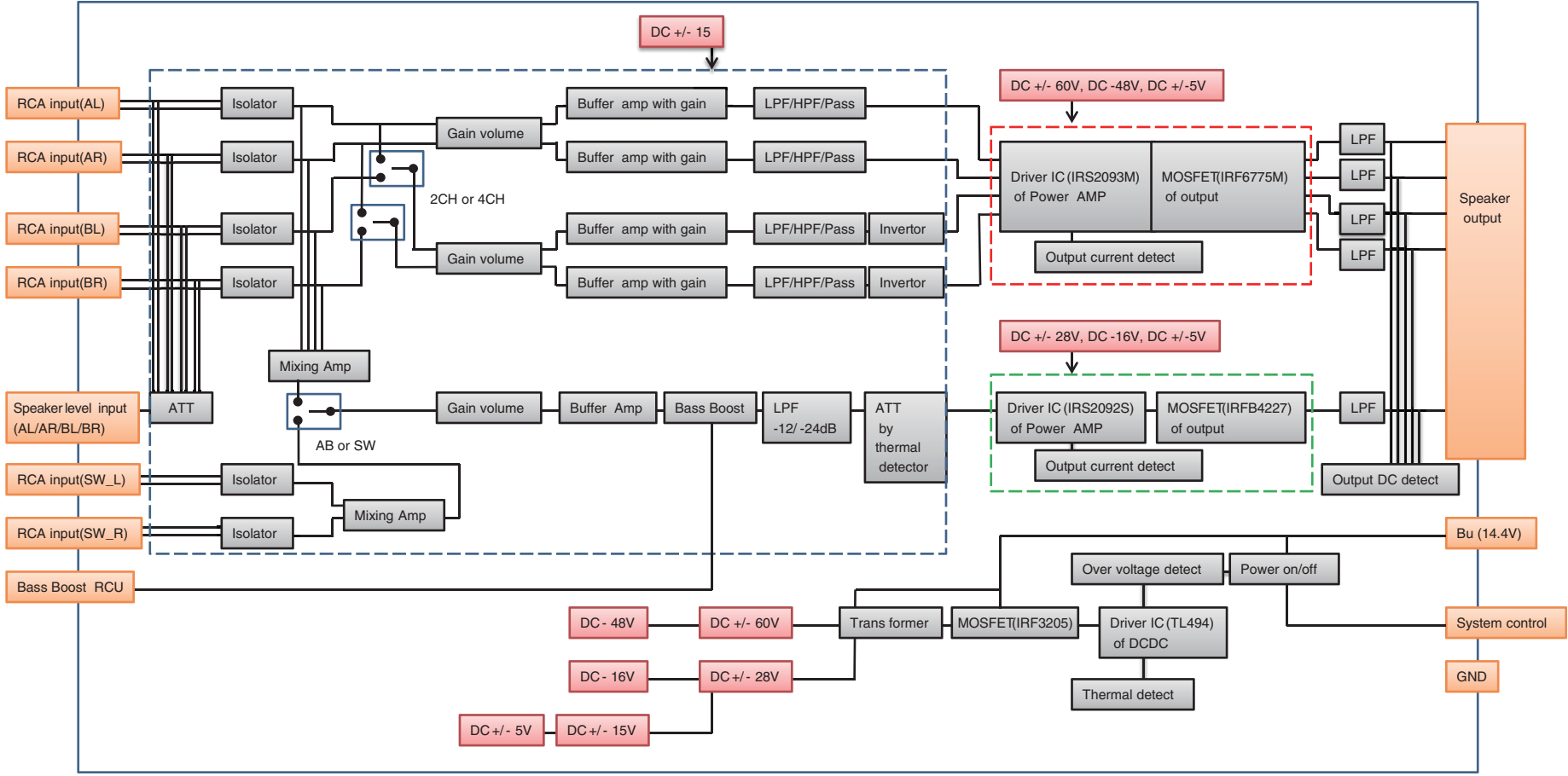
Name	Grease No.	Remarks
Grease	GEM1057	Applying to Heatsink

# 4. BLOCK DIAGRAM

## 4.1 BLOCK DIAGRAM

### 4. BLOCK DIAGRAM

#### A MAIN PCBA



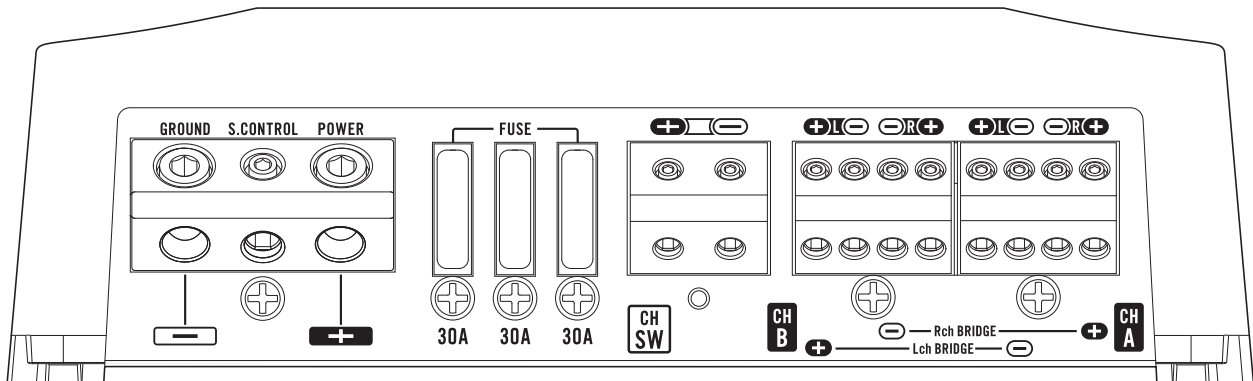
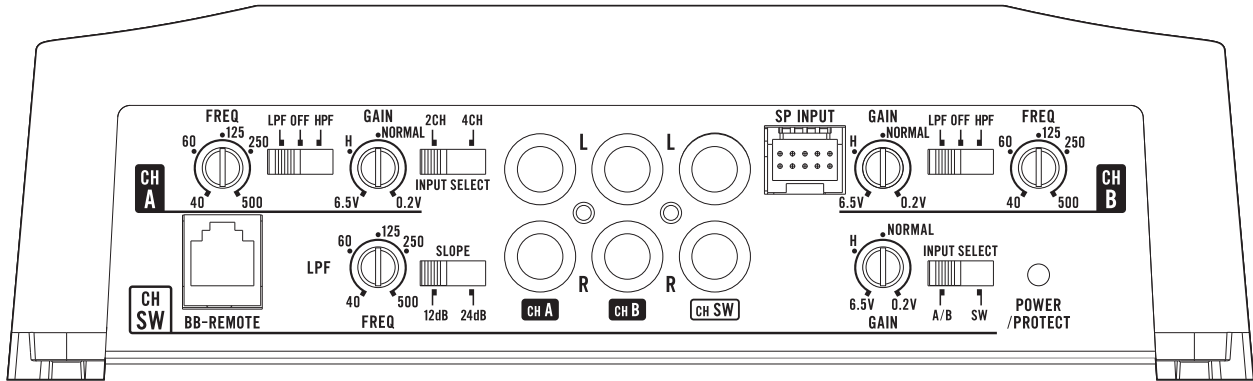
GM-D9605/XEEL

5  
6  
7  
8  
7

F E D C B A

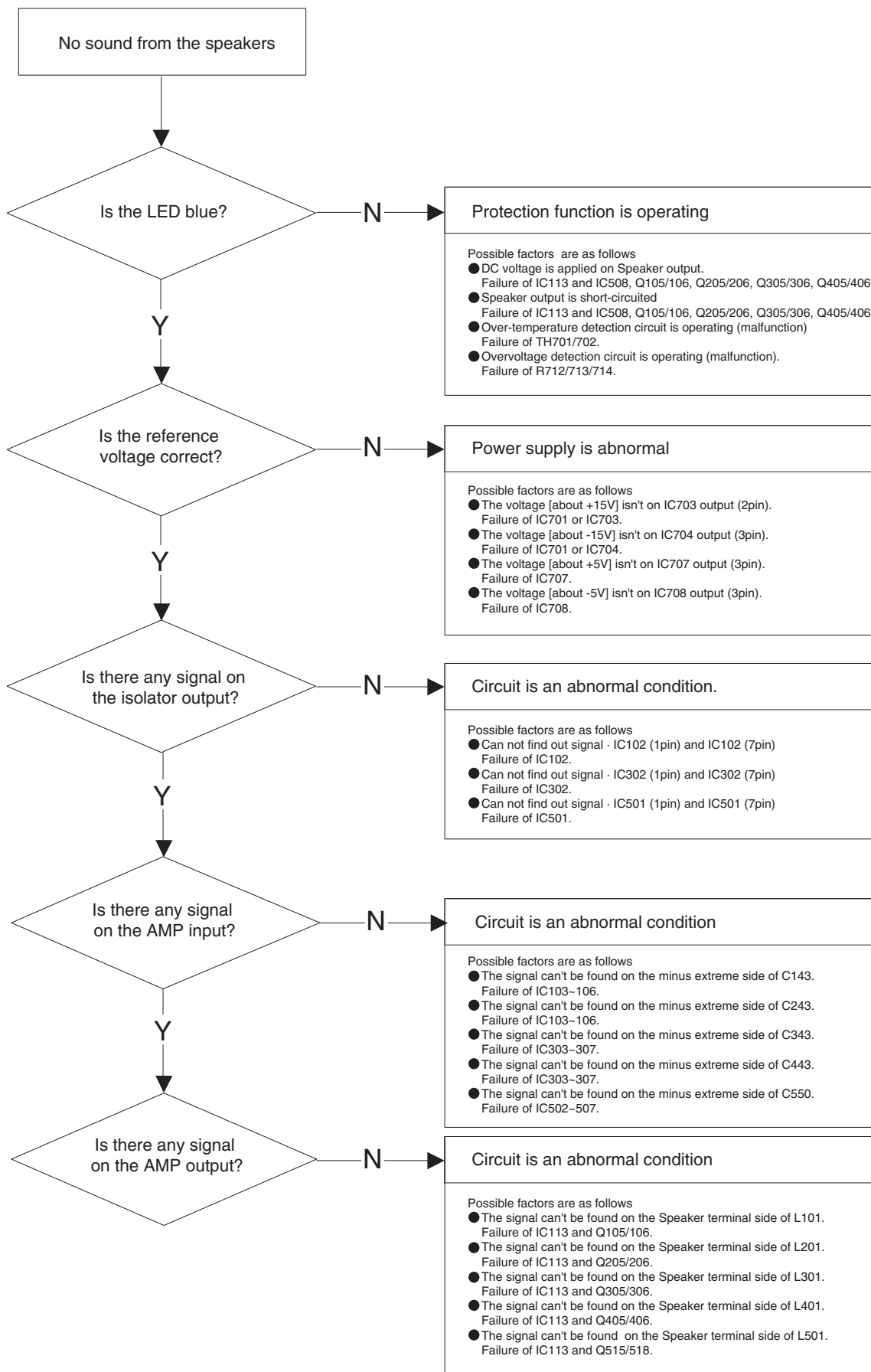
# 5. DIAGNOSIS

## 5.1 CONNECTOR FUNCTION DESCRIPTION





## 5.2 OPERATIONAL FLOWCHART



## 6. SERVICE MODE

There is not information to be shown in this chapter.

## 7. DISASSEMBLY

### ● Removing the Case (Fig.1)

- 1 Remove the six screws and then remove the Case.

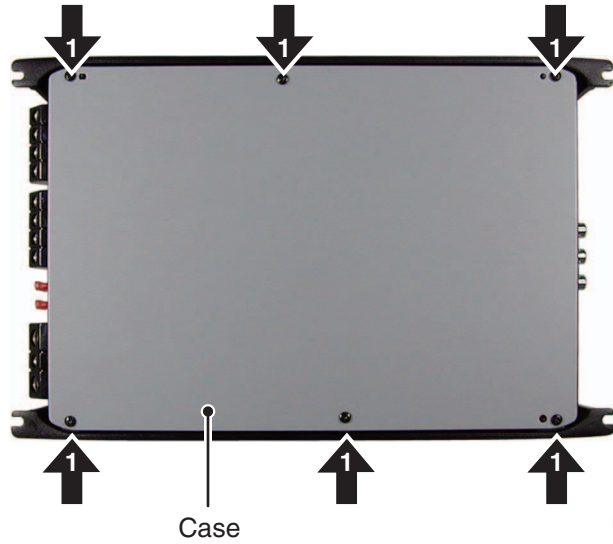


Fig.1

### ● Removing the SUB PCBA (Fig.2)

- 1 Remove the four screws and then remove the SUB PCBA.

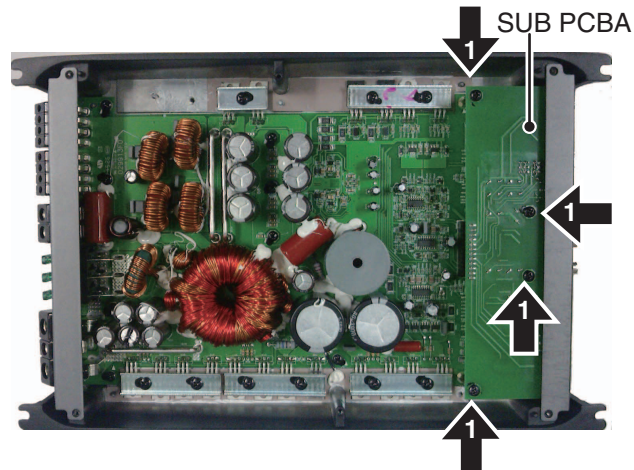


Fig.2

### ● Removing the MAIN PCBA (Fig.3)

- 1 Remove the nine screws and then remove the five Holders.
- 2 Remove the eight screws and then remove the MAIN PCBA.

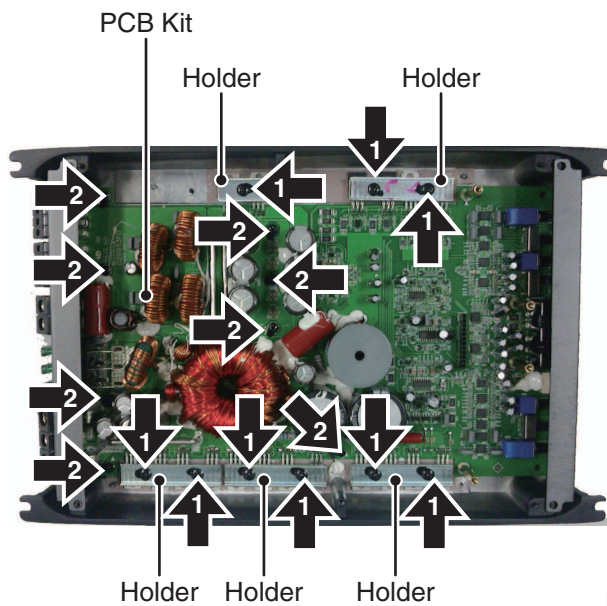


Fig.3

Apply the glue (TB1401B or TB1401M) to all screws when you assemble the product.

When you replace parts that are applied silicon glue, re-apply silicon glue to the same place after replacing.

# 8. ADJUSTMENT

## 8.1 ADJUSTMENT REQUIRED WHEN THE UNIT IS REPLACED

- When any of the following assemblies is replaced, it is necessary to perform the adjustment.

IC 508



"8.2 SUB WOOFER POWER AMP OVERCURRENT ADJUSTMENT "

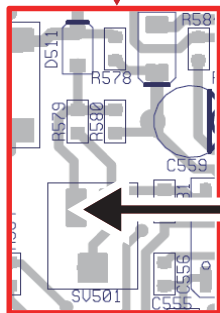
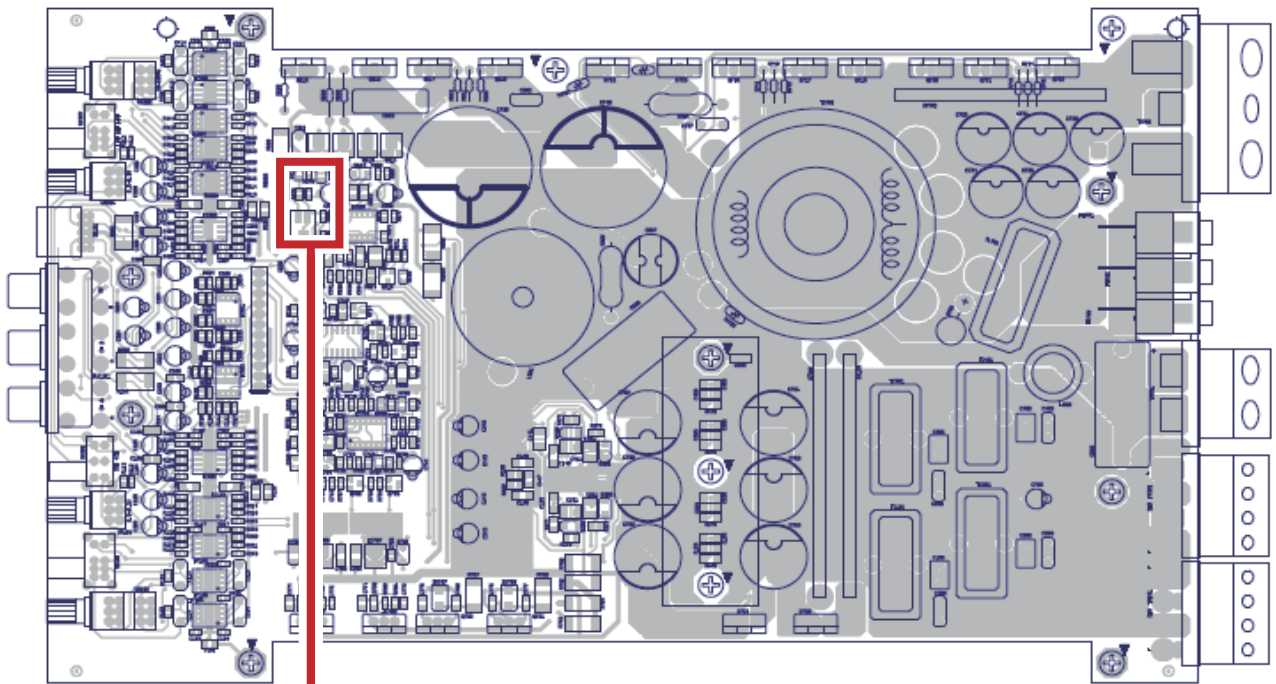
## 8.2 SUB WOOFER POWER AMP OVERCURRENT ADJUSTMENT

- Protective function may start working when you turn up the volume of head unit.
- If the amplifier output is short-circuited, the protection function may not work and malfunction may occur to the amplifier output.



### ● Connection Diagram

**A** MAIN PCBA



Multimeter

GND (Chassis)



### ● Adjustment Method

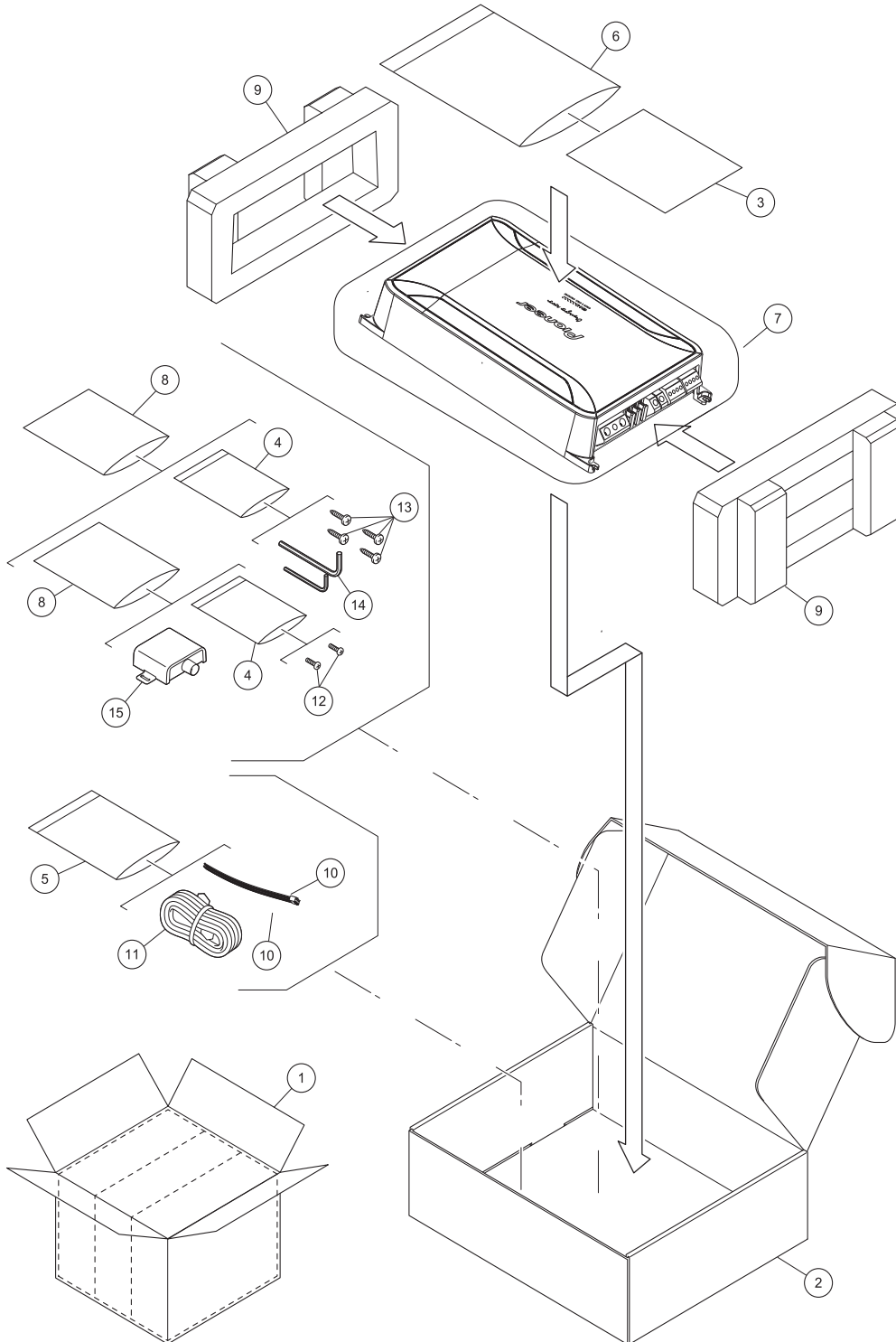
Symptoms due to improper adjustment

Adustment item	Measurement point	Masuring instruments	Specs	Adjusting point
Amplifier output current limit value setup	Between D511 anode and GND (Chassis)	Multimeter	5.7V	SV501

# 9. EXPLODED VIEWS AND PARTS LIST

- NOTES :
- Parts marked by "\*" are generally unavailable because they are not in our Master Spare Parts List.
  - The ⚠ mark found on some component parts indicates the importance of the safety factor of the part. Therefore, when replacing, be sure to use parts of identical designation.
  - Screw adjacent to ∇ mark on the product are used for disassembly.
  - For the applying amount of lubricants or glue, follow the instructions in this manual.  
(In the case of no amount instructions, apply as you think it appropriate.)

## 9.1 PACKING



**PACKING SECTION PARTS LIST**

<u>Mark No.</u>	<u>Description</u>	<u>Part No.</u>	<u>Mark No.</u>	<u>Description</u>	<u>Part No.</u>
1	Contain Box	15010510401	9	Foam	15130108200
2	Unit Box	15050307001	10	HI-input cabel	16080319600
3	Owner's Manual	15090317101	11	Remote cable	16080307710
4	Bubble bag of screw	15120401000	12	ST3*10 screw	16090104020
5	Palstic bag of cable	15120100800	13	ST4*18 screw	16090112010
6	Palstic bag of manual	15120206610	14	M3 wrench	16100200250
7	Palstic bag of unit	15120212830	15	M1.5 wrench	16100200260
8	Bubble bag of accessory	15120401000			

**Owner's Manual**

<b>Part No.</b>	<b>Language</b>
15090317101	English, Spanish(Espanol), Portuguese(B), Arabic

# 9.2 EXTERIOR

A

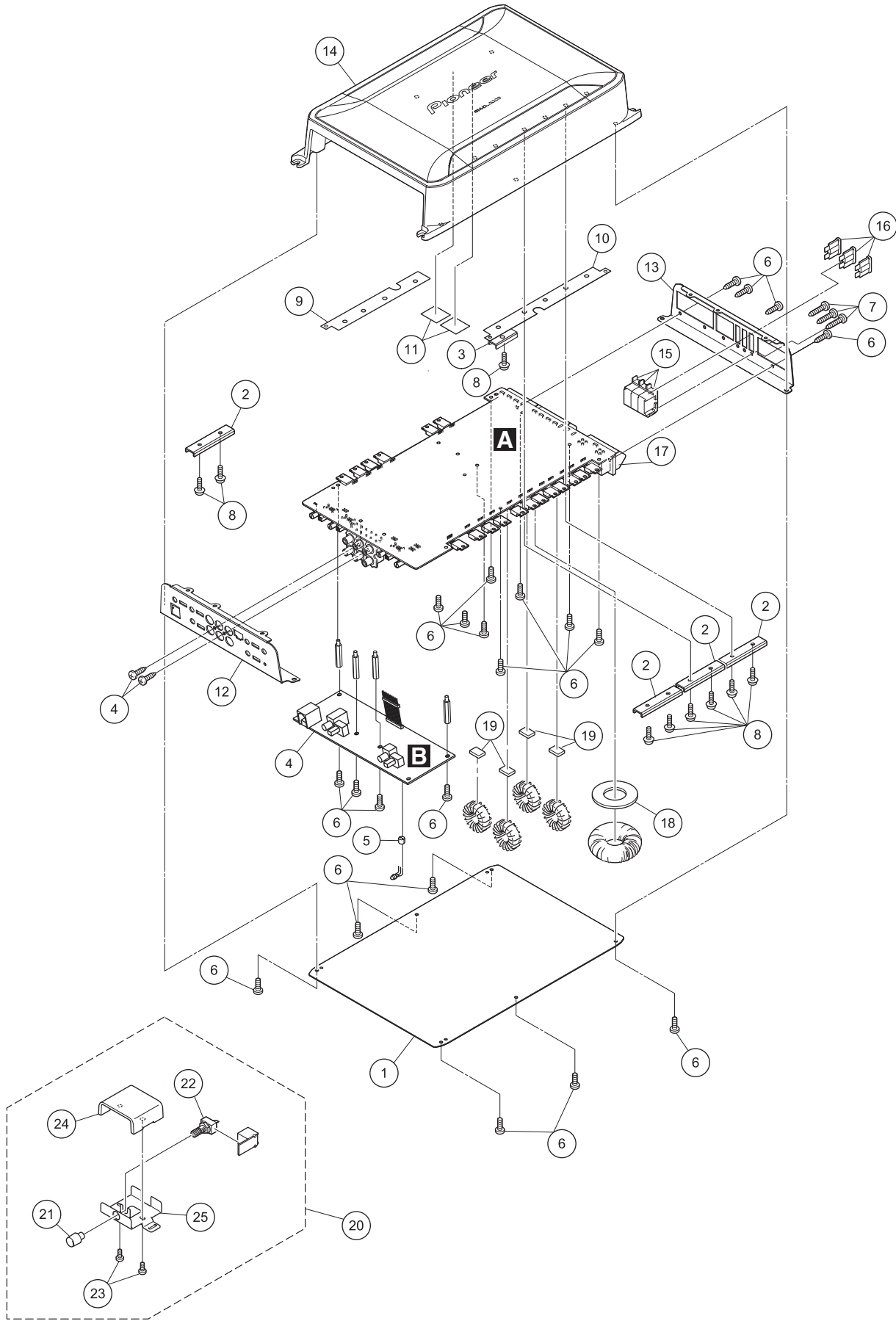
B

C

D


E

F



GM-D9605/XEEL

## EXTERIOR SECTION PARTS LIST

<u>Mark No.</u>	<u>Description</u>	<u>Part No.</u>
1	Bottom case	11100401200
2	TR bracket (58*17*1.5)	11120300100
3	TR bracket (28*17*1.5)	11120300300
4	SUB PCBA	32303912
5	LED support	13030100420
6	M3*8 screw	16090203110
7	ST3*8 screw	16090103210
8	M3.5*12 screw	16090205355
9	Silicon pad 23*170mm	16170201000
10	Silicon pad 23*230mm	16170201000
11	Silicon pad 21*21/1mm	16170201200
12	Input panel	22303916
13	Output panel	22303917
14	Heat sink	11090109400
15	Fuse holder	14120102700
 16	Fuse (30A)	14120300600
17	Main PCBA	32303911
18	Rubber pad #45-#25/1.6	16170108810
19	Rubber pad 12*7/1.6	16170108910
20	Remote controller unit	42300315
21	Knob	13200203600
22	Volume	14030302200
23	ST2.6*10 screw	16090101710
24	Remote cover	22300113
25	Remote bottom	22300115

### \*NOTE

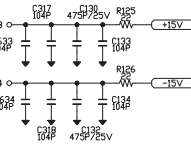
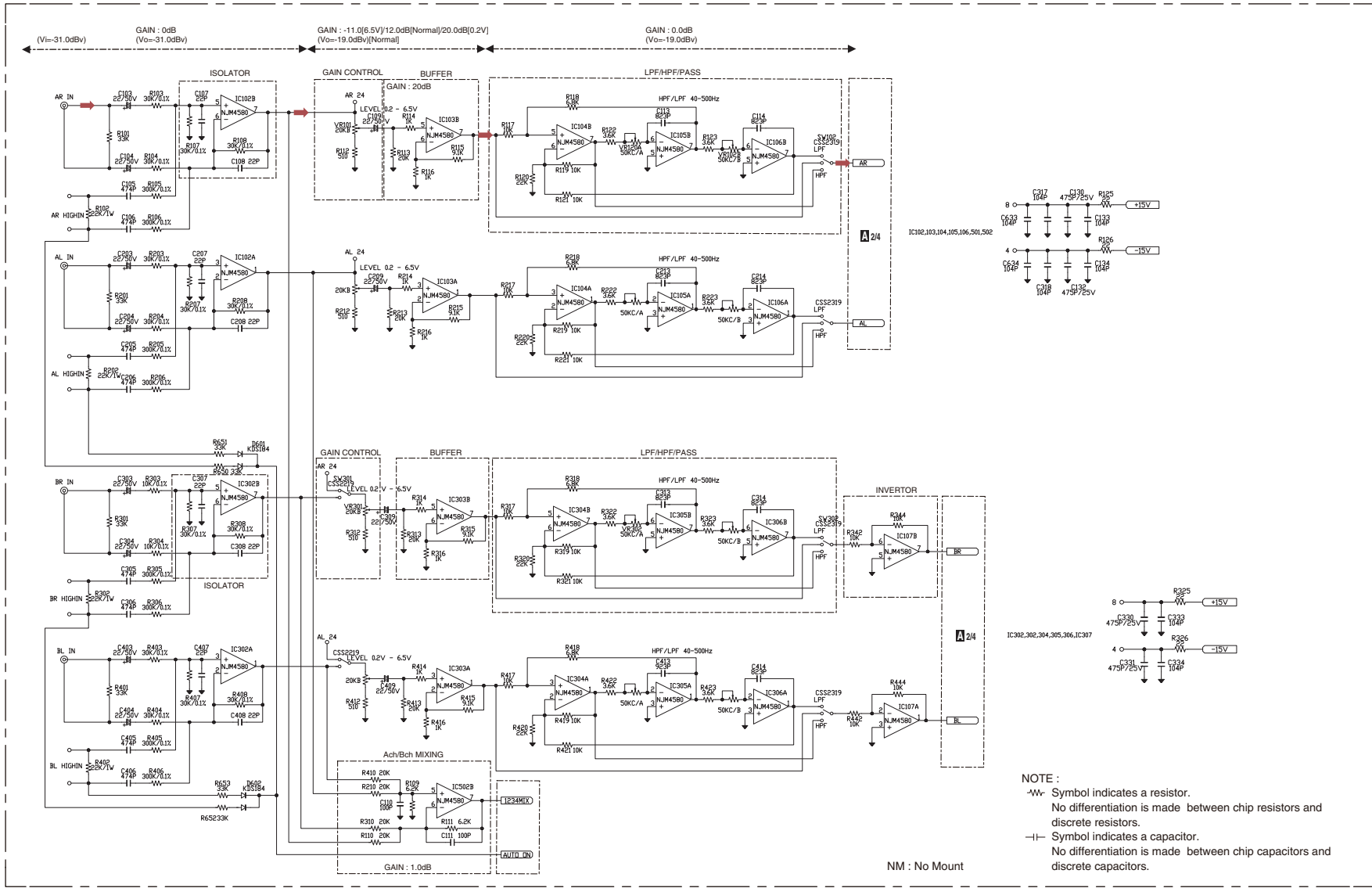
When you replace sheets #9 & #10, re-apply silicon grease (GEM1057) after wiping off silicon grease.

# SCHEMATIC DIAGRAM

Note: When ordering service parts, be sure to refer to "EXPLODED VIEWS AND PARTS LIST" or "ELECTRICAL PARTS LIST".

**A** 1/4 MAIN PCBA(AL/AR and BL/BR ch PART)

# 10. SCHEMATIC DIAGRAM 10.1 MAIN PCBA (AL/AR and BL/BR ch PART)

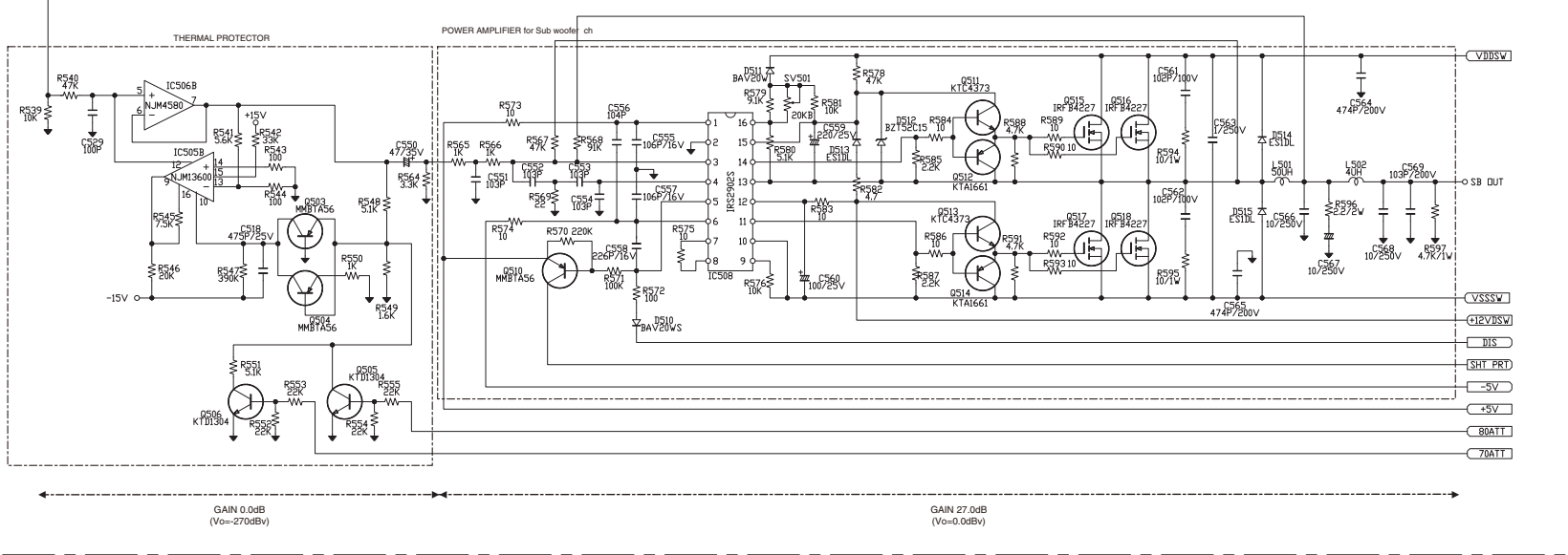
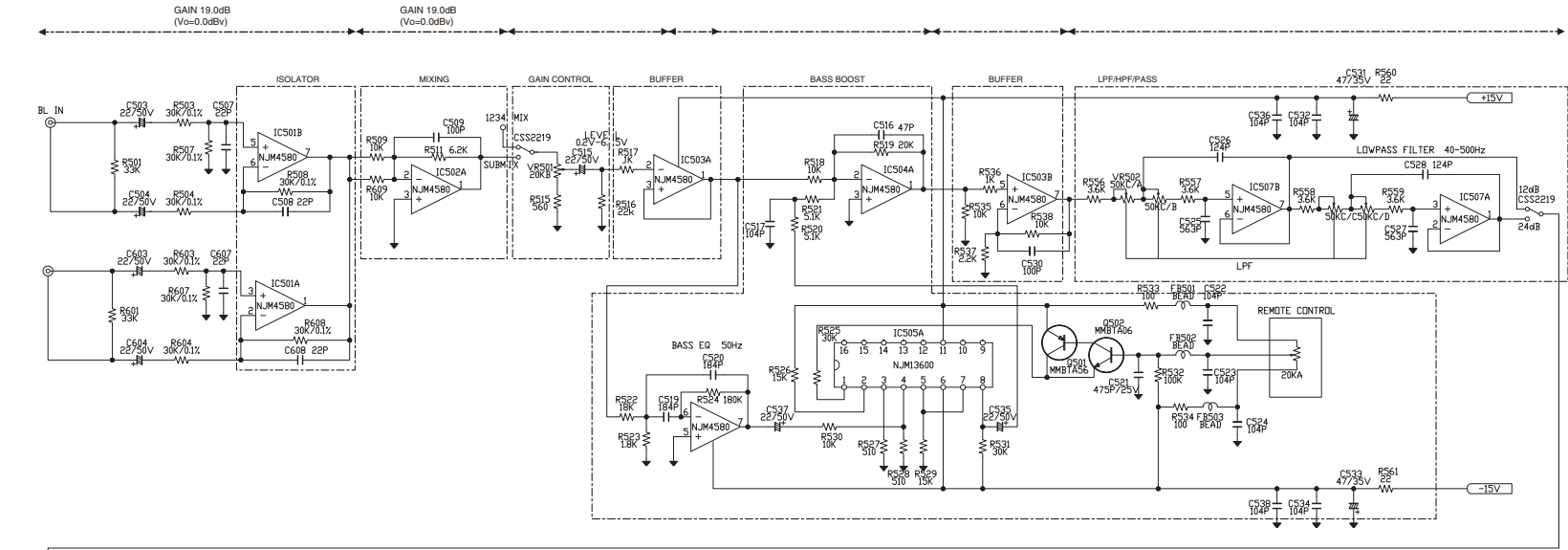






**A** 3/4 MAIN PCBA(SW channel)

**B** SUB PCBA



GAIN 19.0dB  
(V<sub>o</sub>=0.0dBv)

GAIN 19.0dB  
(V<sub>o</sub>=0.0dBv)

GAIN 0.0dB  
(V<sub>o</sub>=-27.0dBv)

GAIN 27.0dB  
(V<sub>o</sub>=0.0dBv)

**A** 3/4 **B**

**A** 3/4 **B**

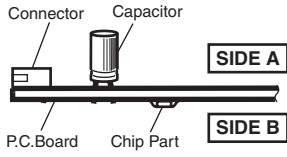


# PCB CONNECTION DIAGRAM

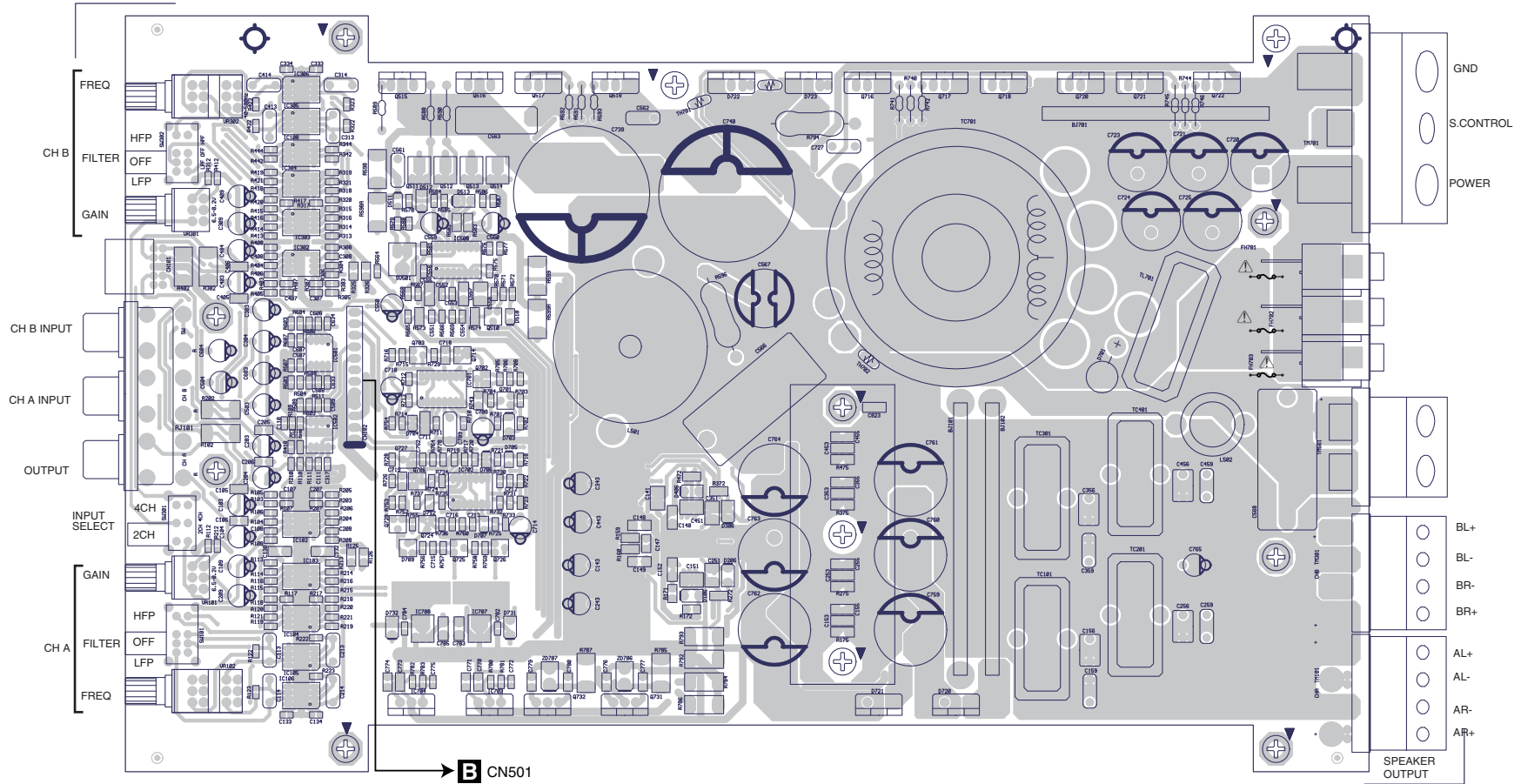
## NOTE FOR PCB DIAGRAMS

1. The parts mounted on this PCB include all necessary parts for several destination.  
For further information for respective destinations, be sure to check with the schematic diagram.

2. Viewpoint of PCB diagrams



## A MAIN PCBA



GM-D9605/XEEL

A

A



11.2 SUB PCBA

1

2

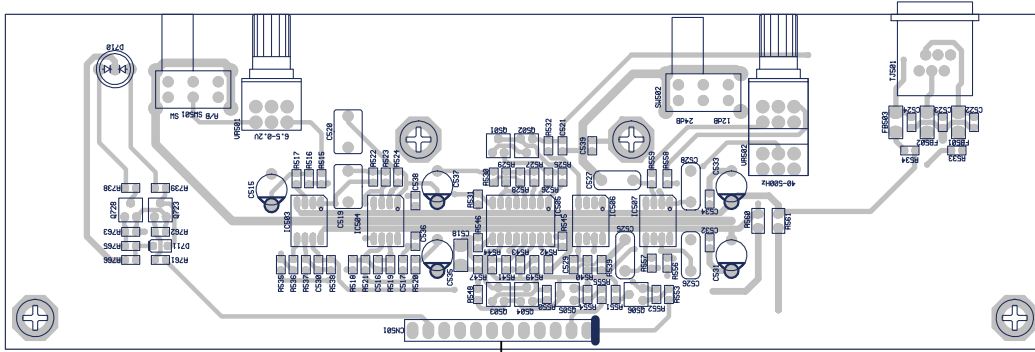
3

4

A

**B** SUB PCBA

**SIDE A**



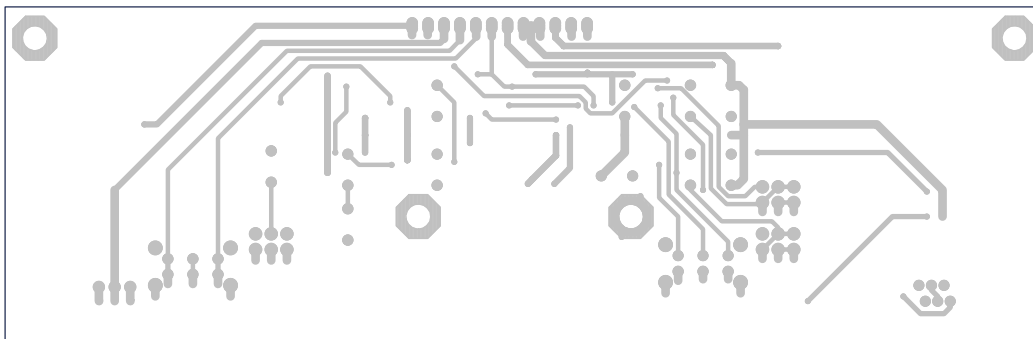
B

C

**A** CN102

**B** SUB PCBA

**SIDE B**



D

E

F

**B**

**B**

1

2

3

4

# 12. ELECTRICAL PARTS LIST

Circuit Symbol and No.

Part No.

Circuit Symbol and No.

Part No.

**A**

Unit Number : 323033911,32303912

Unit Name : MAIN PCBA,SUB PCBA

## MISCELLANEOUS

IC 102	IC	14080207400
IC 103	IC	14080207400
IC 104	IC	14080207400
IC 105	IC	14080207400
IC 106	IC	14080207400
IC 108	IC	14080207400
IC 113	IC	14080207110
IC 302	IC	14080207400
IC 303	IC	14080207400
IC 304	IC	14080207400
IC 305	IC	14080207400
IC 306	IC	14080207400
IC 501	IC	14080207400
IC 502	IC	14080207400
IC 503	IC	14080207400
IC 504	IC	14080207400
IC 505	IC	14080207500
IC 506	IC	14080207400
IC 507	IC	14080207400
IC 508	IC	14080207100
IC 701	IC	14080207250
IC 702	IC	14080207300
IC 703	IC	14060401300
IC 704	IC	14060401400
IC 707	IC	14080211300
IC 708	IC	14080211400
Q 104	Transistor	14070301400
Q 105	POWER MOS FET	14070600100
Q 106	POWER MOS FET	14070600100
Q 205	POWER MOS FET	14070600100
Q 206	POWER MOS FET	14070600100
Q 305	POWER MOS FET	14070600100
Q 306	POWER MOS FET	14070600100
Q 405	POWER MOS FET	14070600100
Q 406	POWER MOS FET	14070600100
Q 501	Transistor	14070301400
Q 502	Transistor	14070301500
Q 503	Transistor	14070301400
Q 504	Transistor	14070301400
Q 505	Transistor	14070301600
Q 506	Transistor	14070301600
Q 510	Transistor	14070301400
Q 511	Transistor	14070302800
Q 512	Transistor	14070302900
Q 513	Transistor	14070302800
Q 514	Transistor	14070302900
Q 515	POWER MOS FET	14070200700
Q 516	POWER MOS FET	14070200700
Q 517	POWER MOS FET	14070200700
Q 518	POWER MOS FET	14070200700
Q 701	Transistor	14070301500

Q 702	Transistor	14070301400
Q 703	Transistor	14070301400
Q 706	Transistor	14070301500
Q 707	Transistor	14070301500
Q 708	Transistor	14070301500
Q 709	POWER MOS FET	14070200500
Q 710	Transistor	14070301500
Q 711	Transistor	14070301400
Q 712	Transistor	14070301500
Q 713	Transistor	14070301400
Q 714	Transistor	14070301500
Q 716	POWER MOS FET	14070200500
Q 717	POWER MOS FET	14070200500
Q 720	POWER MOS FET	14070200500
Q 721	POWER MOS FET	14070200500
Q 722	POWER MOS FET	14070200500
Q 723	Transistor	14070301400
Q 724	Transistor	14070301500
Q 725	Transistor	14070301400
Q 726	Transistor	14070301500
Q 727	Transistor	14070301400
Q 728	Transistor	14070301400
Q 729	Transistor	14070301500
Q 731	Transistor	14070106700
Q 732	Transistor	14070106700
D 101	Diode	14060902500
D 105	Diode	14060902500
D 106	Diode	14060902610
D 107	Diode	14060902610
D 108	Diode	14060902610
D 205	Diode	14060902500
D 206	Diode	14060902610
D 207	Diode	14060902610
D 208	Diode	14060902610
D 305	Diode	14060902500
D 306	Diode	14060902610
D 307	Diode	14060902610
D 308	Diode	14060902610
D 405	Diode	14060902500
D 406	Diode	14060902610
D 407	Diode	14060902610
D 408	Diode	14060902610
D 510	Diode	14060902500
D 511	Diode	14060902500
D 512	Diode	14060902760
D 513	Diode	14060902610
D 514	Diode	14060902610
D 515	Diode	14060902610
D 601	Diode	14060905600
D 602	Diode	14060905600
D 701	Diode	14060103510
D 702	Diode	14060902610
D 703	Diode	14060902400
D 704	Diode	14060902500
D 705	Diode	14060902500
D 706	Diode	14060902500
D 707	Diode	14060902500
D 709	Diode	14060905600

	1	2	3	4
	<u>Circuit Symbol and No.</u>	<u>Part No.</u>	<u>Circuit Symbol and No.</u>	<u>Part No.</u>
	D 710 Diode	14060503800	R 119	14021603800
			R 120	14021604300
	D 711 Diode	14060902500		
	D 712 Diode	14060902500	R 121	14021603800
A	D 720 Diode	14060103700	R 122	14021603150
	D 721 Diode	14060103800	R 123	14021603150
	D 722 Diode	14060103700	R 125	14021700520
			R 126	14021700520
	D 723 Diode	14060103800		
	D 731 Diode	14060902610	R 154	14021605400
	D 732 Diode	14060902610	R 155	14021602700
	L 101 Coil	14050106100	R 156	14021603200
	L 201 Coil	14050106100	R 157	14021604800
			R 158	14021601300
	L 301 Coil	14050106100		
	L 401 Coil	14050106100	R 159	14021400115
B	L 501 Coil	14050106000	R 160	14021400115
	L 502 Coil	14050106500	R 161	14021605200
	L 701 Coil	14050106200	R 162	14021600900
			R 163	14021603300
	T 701 Transformer	14090303100		
	TH701 Thermistor	14021101600	R 164	14021603700
	TH702 Thermistor	14021100160	R 165	14021403360
	SW101 Slide Switch	14100105890	R 166	14021603300
	SW301 Slide Switch	14100105790	R 167	14021603800
			R 168	14021404025
	SW302 Slide Switch	14100105890		
	SW501 Slide Switch	14100105790	R 169	14021602700
	SW502 Slide Switch	14100105790	R 171	14021700200
C	VR101 Rotary VR 20 kohm	14030302010	R 172	14021700200
	VR102 Rotary VR 50 kohm	14030302110	R 173	14021700500
			R 174	14021700500
	VR301 Rotary VR 20 kohm	14030302010		
	VR302 Rotary VR 50 kohm	14030302110	R 175	14021900200
	VR501 Rotary VR	14021450110	R 176	14021440700
	VR501 Rotary VR 20 kohm	14030302010	R 177	14021440400
	VR502 Rotary VR 20 kohm	14030302110	R 197	14021900650
			R 198	14021900650
	CN101 Terminal	14111200850		
	CN201 Terminal	14111720400	R 201	14021604451
	CN301 Terminal	14111720400	R 202	14021441500
	CN401 Terminal	14111810300	R 203	14021604415
D	CN501 Terminal	14111720300	R 204	14021604415
			R 205	14021605500
	CN701 POWER TERMINAL	14111720100		
	ZD707 Zener Diode	14060902990	R 206	14021605500
	ZD706 Zener Diode	14060902990	R 207	14021604415
			R 208	14021604415
			R 210	14021604210
			R 212	14021602400
			R 213	14021604200
	R 101	14021604451		
	R 102	14021441500	R 214	14021602700
	R 103	14021604415	R 215	14021603780
	R 104	14021604415	R 216	14021602700
E	R 105	14021605500	R 217	14021603800
			R 218	14021603700
	R 106	14021605500	R 219	14021603800
	R 107	14021604415	R 220	14021604300
	R 108	14021604415	R 221	14021603800
	R 109	14021603520	R 222	14021603150
	R 110	14021604210		
			R 223	14021603150
	R 111	14021603520	R 255	14021602700
	R 112	14021602400	R 256	14021603200
	R 113	14021604200	R 257	14021604800
	R 114	14021602700	R 258	14021601300
	R 115	14021603780		
F			R 265	14021403360
	R 116	14021602700	R 266	14021603300
	R 117	14021603800	R 267	14021603800
	R 118	14021603700		

### RESISTORS



5	6	7	8
<u>Circuit Symbol and No.</u>	<u>Part No.</u>	<u>Circuit Symbol and No.</u>	<u>Part No.</u>
R 268	14021404025	R 413	14021604200
R 272	14021700200	R 414	14021602700
R 273	14021700500	R 415	14021603780
R 274	14021700500	R 416	14021602700
R 275	14021900200	R 417	14021603800
R 276	14021440700	R 418	14021603700
R 277	14021440400	R 419	14021603800
R 297	14021900650	R 420	14021604300
R 298	14021900650	R 421	14021603800
R 301	14021604451	R 422	14021603150
R 302	14021441500	R 423	14021603150
R 303	14021604415	R 442	14021603800
R 304	14021604415	R 444	14021603800
R 305	14021605500	R 455	14021602700
R 306	14021605500	R 456	14021603200
R 307	14021604415	R 457	14021604800
R 308	14021604415	R 458	14021601300
R 310	14021604210	R 465	14021403360
R 312	14021602400	R 466	14021603300
R 313	14021604200	R 467	14021603800
R 314	14021602700	R 468	14021404025
R 315	14021603780	R 472	14021700200
R 316	14021602700	R 473	14021700500
R 317	14021603800	R 474	14021700500
R 318	14021603700	R 475	14021900200
R 319	14021603800	R 476	14021440700
R 320	14021604300	R 477	14021440400
		R 497	14021900650
R 321	14021603800	R 498	14021900650
R 322	14021603150	R 501	14021604451
R 323	14021603150		
R 325	14021700520	R 501	14021500100
R 326	14021700520	R 502	14021500100
		R 503	14021604415
R 342	14021603800	R 503	14021500100
R 344	14021603800	R 504	14021604415
R 355	14021602700		
R 356	14021603200	R 507	14021604415
R 357	14021604800	R 508	14021604415
		R 509	14021603800
R 358	14021601300	R 511	14021603525
R 365	14021403360	R 515	14021602450
R 366	14021603300		
R 367	14021603800	R 516	14021604300
R 368	14021404025	R 517	14021602700
		R 518	14021603800
R 372	14021700200	R 519	14021604200
R 373	14021700500	R 520	14021603400
R 374	14021700500		
R 375	14021900200	R 521	14021603400
R 376	14021440700	R 522	14021604070
		R 523	14021602921
R 377	14021440400	R 524	14021605380
R 397	14021900650	R 525	14021604420
R 398	14021900650		
R 401	14021604451	R 526	14021604050
R 402	14021441500	R 527	14021602400
		R 528	14021602400
R 403	14021604415	R 529	14021604050
R 404	14021604415	R 530	14021603800
R 405	14021605500		
R 406	14021605500	R 531	14021604420
R 407	14021604415	R 532	14021605200
		R 533	14021600900
R 408	14021604415	R 534	14021600900
R 410	14021604210	R 535	14021603800
R 412	14021602400		

1

2

3

4

Circuit Symbol and No.Part No.Circuit Symbol and No.Part No.

A	R 536	14021602700	R 601	14021604451
	R 537	14021603000	R 603	14021604415
	R 538	14021603800	R 604	14021604415
	R 539	14021603800	R 607	14021604415
	R 540	14021604800	R 608	14021604415
	R 541	14021603500	R 609	14021603800
	R 542	14021604451	R 620	14021604451
	R 543	14021600900	R 621	14021604451
	R 544	14021600900	R 622	14021604451
	R 545	14021403360	R 623	14021604451
	R 546	14021604200	R 701	14021604300
	R 548	14021603400	R 702	14021603300
	R 549	14021602915	R 703	14021605200
	R 550	14021602700	R 704	14021603000
B	R 551	14021603400	R 705	14021603300
	R 552	14021604300	R 706	14021603000
	R 553	14021604300	R 707	14021600900
	R 554	14021604300	R 708	14021603000
	R 555	14021604300	R 709	14021600900
	R 556	14021603150	R 710	14021603140
	R 557	14021603150	R 711	14021603800
	R 558	14021603150	R 712	14021605400
	R 559	14021603150	R 713	14021605360
	R 560	14021400122	R 714	14021605380
	R 561	14021400122	R 715	14021603800
C	R 564	14021603140	R 716	14021603800
	R 565	14021602700	R 717	14021602700
	R 566	14021602700	R 718	14021603120
	R 567	14021604800	R 719	14021605200
	R 568	14021605190	R 720	14021605200
	R 569	14021600200	R 721	14021605160
	R 570	14021605400	R 722	14021603800
	R 571	14021605200	R 723	14021603800
	R 572	14021600900	R 724	14021603000
	R 573	14021400115	R 725	14021605200
D	R 574	14021400115	R 726	14021603800
	R 575	14021500010	R 728	14021603800
	R 576	14021603800	R 729	14021605200
	R 578	14021604800	R 730	14021605200
	R 579	14021603780	R 731	14021602921
	R 580	14021603400	R 732	14021602400
	R 581	14021603800	R 733	14021603110
	R 582	14021700200	R 734	14021603000
	R 583	14021400115	R 735	14021603000
	R 584	14021500010	R 736	14021605400
E	R 585	14021603000	R 737	14021604800
	R 586	14021500010	R 738	14021603751
	R 587	14021603000	R 739	14021602921
	R 588	14021201600	R 740	14021232500
	R 589	14021200060	R 741	14021232500
	R 590	14021200060	R 742	14021232500
	R 591	14021235300	R 743	14021700520
	R 592	14021231000	R 744	14021232500
	R 593	14021231000	R 745	14021232500
	R 594	14021440400	R 746	14021232500
F	R 595	14021440400	R 750	14021440400
	R 596	POWER MOX R 14021380200	R 751	14021440400
	R 597	14021440885	R 752	14021604300
	R 598	14021441300	R 753	14021603800
	R 599	14021441300	R 754	14021605600

1

2

3

4

5		6		7		8	
<u>Circuit Symbol and No.</u>		<u>Part No.</u>		<u>Circuit Symbol and No.</u>		<u>Part No.</u>	
R 755		14021603800		C 147		14042002010	
R 756		14021603800		C 148		14042206100	
R 757		14021603800		C 149		14042206100	
R 758		14021603800					
R 759		14021603800		C 150		14042206100	A
				C 151		14022100600	
R 760		14021605400		C 152		14042206100	
R 761		14021604300		C 153		14042201400	
R 762		14021604300		C 155		14042201400	
R 763		14021604300					
R 764		14021603800		C 156		14040700900	
				C 157		14042000740	
R 765		14021604300		C 158		14042000740	
R 766		14021604300		C 159		14041540800	
R 770		14021604300		C 162		14042202000	
R 771		14021604300					
R 772		14021604300		C 163		14042202000	B
				C 203		14041604920	
R 773		14021604300		C 204		14041604920	
R 774		14021604300		C 205		14042002305	
R 775		14021403360		C 206		14042002305	
R 776		14021603800					
R 777		14021602700		C 207		14042300390	
				C 208		14042300390	
R 778		14021603800		C 209		14041604920	
R 780		14021601850		C 213		14041540740	
R 781		14021603120		C 214		14041540740	
R 782		14021601850					
R 783		14021603120		C 242		14042300870	
				C 243		14041604920	C
R 784		14021440500		C 244		14042300860	
R 785		14021440850		C 245		14042300860	
R 786		14021440500		C 246		14042300840	
R 787		14021440900					
R 790		14021441000		C 251		14022100600	
				C 253		14042201400	
R 791		14021441000		C 255		14042201400	
R 792		14021441000		C 256		14040700900	
R 793		14021441000		C 257		14042000740	
R 794	POWER MOX R	14021382000					
R 798		14021603300		C 258		14042000740	
				C 259		14041540800	
R 799		14021603300		C 303		14041604920	D
				C 304		14041604920	
CAPACITORS				C 305		14042002305	
C 103		14041604920		C 306		14042002305	
C 104		14041604920		C 307		14042300390	
C 105		14042002305		C 308		14042300390	
C 106		14042002305		C 309		14041604920	
C 107		14042300390		C 313		14041540740	
C 108		14042300390		C 314		14041540740	
C 109		14041604920		C 317		14042300900	
C 110		14042300540		C 318		14042300900	
C 111		14042300540		C 330		14022100010	E
C 113		14041540740		C 331		14022100010	
C 114		14041540740		C 333		14042300900	
C 130		14022100010		C 334		14042300900	
C 132		14022100010		C 342		14042300870	
C 133		14042300900		C 343		14041604920	
C 134		14042300900		C 344		14042300860	
C 140		14042206100		C 345		14042300860	
C 141		14022100600		C 346		14042300840	
C 142		14042300870		C 351		14022100600	
C 143		14041604920		C 353		14042201400	
C 144		14042300860		C 355		14042201400	F
C 145		14042300860		C 356		14040700900	
C 146		14042300840		C 357		14042000740	

	1	2	3	4
	<u>Circuit Symbol and No.</u>	<u>Part No.</u>	<u>Circuit Symbol and No.</u>	<u>Part No.</u>
	C 358	14042000740	C 557	14022100010
	C 359	14041540800	C 558	14022100600
	C 403	14041604920	C 559	14041605320
A	C 404	14041604920	C 560	14041605220
	C 405	14042002305	C 561	14041539910
	C 406	14042002305	C 562	14041539910
	C 407	14042300390	C 563	14040701000
	C 408	14042300390	C 564	14042202000
	C 409	14041604920	C 565	14042202000
	C 413	14041540740	C 566	14040701100
	C 414	14041540740	C 567	14040801350
	C 442	14042300870	C 568	14040701100
	C 443	14041604920	C 569	14042001550
B	C 444	14042300860	C 603	14041604920
	C 445	14042300860	C 604	14041604920
	C 446	14042300840	C 607	14042300390
	C 451	14022100600	C 608	14042300390
	C 453	14042201400	C 633	14042300900
	C 455	14042201400	C 634	14042300900
	C 456	14040700900	C 708	14041605220
	C 457	14042000740	C 709	14041540000
	C 458	14042000740	C 710	14041605220
	C 459	14041540800	C 711	14022100010
	C 503	14041604920	C 712	14042300900
C	C 504	14041604920		
	C 507	14042300390	C 713	14042300900
	C 508	14042300390	C 714	14041605130
	C 509	14042300540	C 715	14042300900
	C 515	14041604920	C 716	14042300900
	C 516	14042300520	C 718	14042002305
	C 517	14042300900	C 719	14042002305
	C 518	14022100010	C 720	14040803315
	C 519	14041540990	C 721	14040803315
	C 520	14041540990	C 723	14040803315
	C 521	14042300900	C 724	14040803315
D	C 522	14042300900	C 725	14040803315
	C 523	14042300900	C 727	14041539910
	C 524	14042300900	C 728	14042201100
	C 525	14041540700	C 729	14042201100
	C 526	14041540900	C 739	14040803970
	C 527	14041540700	C 740	14040803970
	C 528	14041540900	C 752	14042300900
	C 529	14042300541	C 759	14040803740
	C 530	14042300541	C 760	14040803740
	C 531	14041605130	C 761	14040803740
	C 532	14042300900	C 762	14040803740
E	C 533	14041605130	C 763	14040803740
	C 534	14042300900	C 764	14040803740
	C 535	14041604920	C 765	14041605320
	C 536	14042300900	C 770	14042002305
	C 537	14041604920	C 771	14042002305
	C 538	14042300900	C 772	14042300900
	C 539	14042300900	C 773	14042002305
	C 550	14041605130	C 774	14042002305
	C 551	14041401900	C 775	14042300900
	C 552	14041401900	C 776	14042002305
F	C 553	14041401900	C 777	14042002305
	C 554	14041401900	C 779	14042002305
	C 555	14022100010	C 780	14042002305
	C 556	14042300900	C 782	14042300900

5  
**Circuit Symbol and No.**

6  
**Part No.**

C 783	14042206100
C 784	14042300900
C 785	14042206100
C 801	14042001500
C 802	14042002010
C 803	14021700100
C 804	14021700100
C 805	14041401900
C 806	14042300840
C 807	14041401900
C 808	14042300840
C 809	14041401900
C 810	14042300840
C 811	14041401900
C 812	14042300840
C 813	14041401900
C 814	14042300840
C 823	14042202000

A

B

C

D

E

F