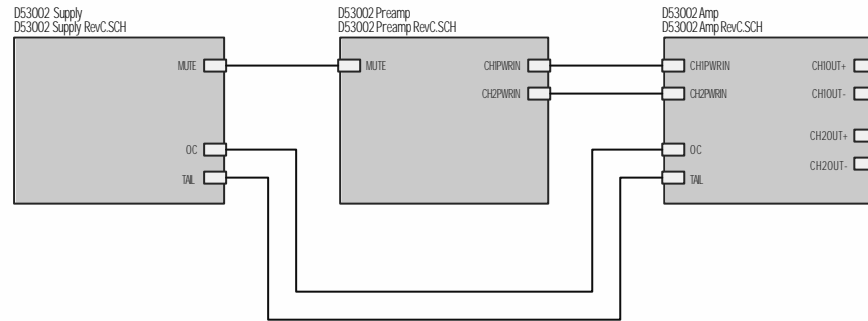


## D5300.2 AMPLIFIER SYSTEM INTERCONNECTION



### UPDATES:

1. COMPONENTS ADDED:  
C97 - C104
2. VALUE CHANGES:  
R120, R122, C8, C13
3. INCORPORATED ECO:  
Change R89 from 12K to 8.2K  
Change R126, R127, from 150 ohms to 100 ohms

### D5 AMPLIFIER PARTS SPECS.

ALL 1/4 Watt Resistors  
2% metal film

ALL 1 Watt Resistors  
5% metal oxide

010HM 2 WATT Resistors shall be wire wound  
All other 2 Watt Resistors are metal oxide

ALL CAPACITORS above 470 uF shall be LOW E.S.R. 105 degrees.  
3300 uF Caps. Are snap in type

POLY CAPS are dipped mylar 100 volt

25C5200 AND 25AH493 are TOSHIBA

TL494 is TEXAS INSTRUMENTS

DG405 is SILICONIX

LI and TI as per DIAMOND AUDIO drawing

POWER and SPEAKER pins as per drawing

### NOTES:

1. Power Ground and Signal Ground MUST be SINGLE POINT GROUNDED at the STORAGE CAPACITORS.
2. PCB copper thickness shall be a minimum of 2 Ounce/in\*\*2.
3. Minimum Pad/Via size is 0.050" Diameter.
4. Minimum hole size is 0.025" Diameter.
5. Minimum Signal Trace width is 0.015".
6. Minimum Power Trace width is 0.250" (for Output and +/- Rails)
7. Mounting pads for 0.100" center through hole components, 1/4W Resistors, and small Capacitors shall be a Minimum of 0.075"X0.075" (preferred pad is 0.075" X 0.100" OVAL or larger id space permits).
8. All PCBs and Schematics to be in PROTEL format ONLY. (www.protel.com)
9. Heat sink all TO-220 or larger ICs unless mounting is called out as FREE AIR.
10. PCB and Schematic Libraries are to be supplied as part of the deliverables.
11. Slicscreen shall be WHITE non-conductive with a minimum Text size of 0.040" Height.

### CONTACTS:

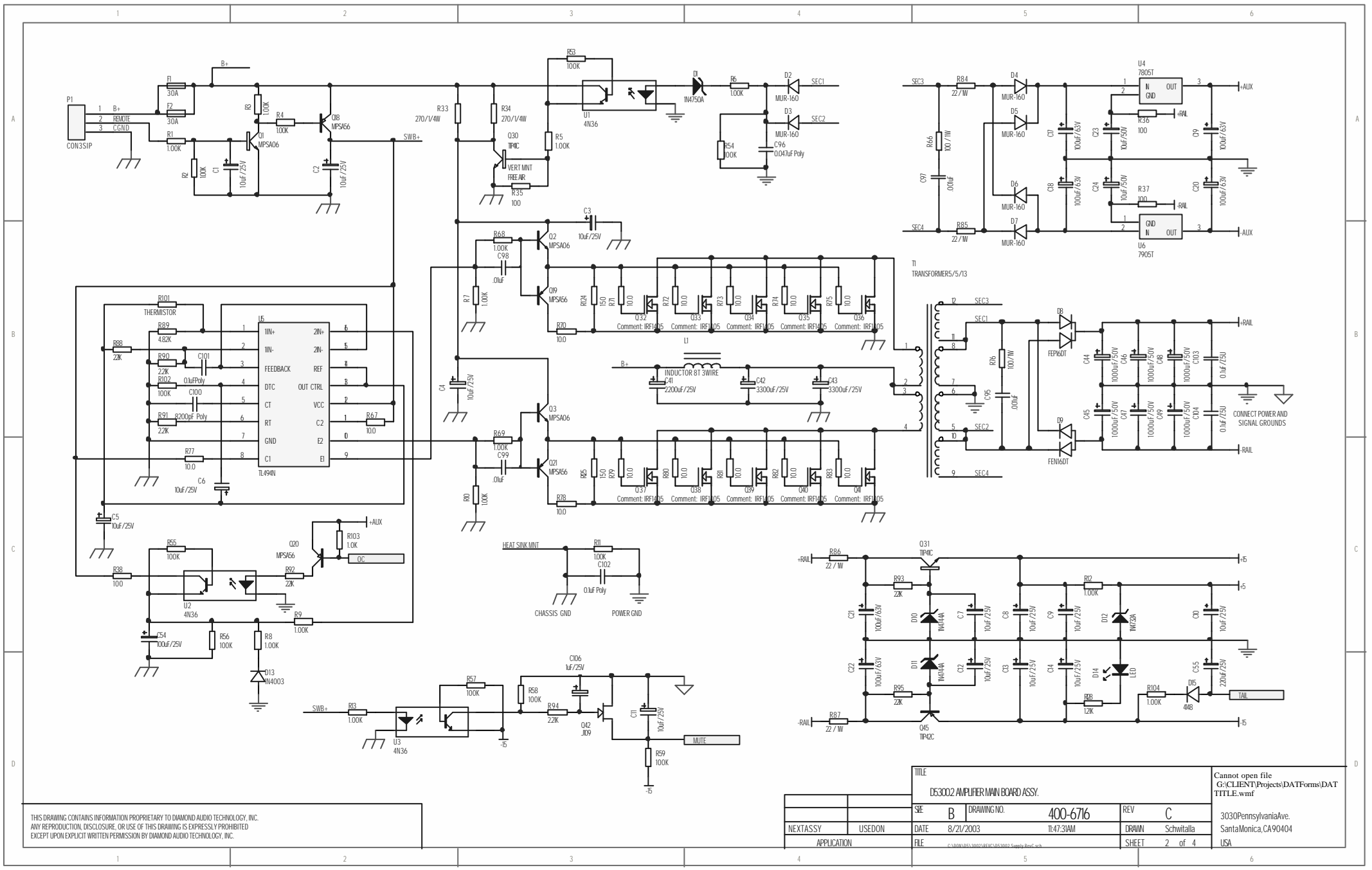
Mark Busler  
(480) 813-6200  
mbusler@diamondaudio.com

J Schwalla  
(310) 582-1121 X17  
(310) 600-3841 Mobile  
jschwalla@diamondaudio.com

THIS DRAWING CONTAINS INFORMATION PROPRIETARY TO DIAMOND AUDIO TECHNOLOGY, INC.  
ANY REPRODUCTION, DISCLOSURE, OR USE OF THIS DRAWING IS EXPRESSLY PROHIBITED  
EXCEPT UPON EXPLICIT WRITTEN PERMISSION BY DIAMOND AUDIO TECHNOLOGY, INC.

TITLE		D5300.2 AMPLIFIER MAIN BOARD ASSY.		Cannot open file F:\EDA\Projects\D5\D56002\DATTTT L.E.wmf	
SSE	B	DRAWING NO.	400-6716	REV	C
NEXT ASSY	USED ON	DATE	8/21/2003	TL:47:31AM	DRWN Schwalla
APPLICATION	FILE	C:\WORK\03-30002\03-30002 Project RevF.sch		SHEET	1 of 4
				USA	

3030 Pennsylvania Ave.  
Santa Monica, CA 90404

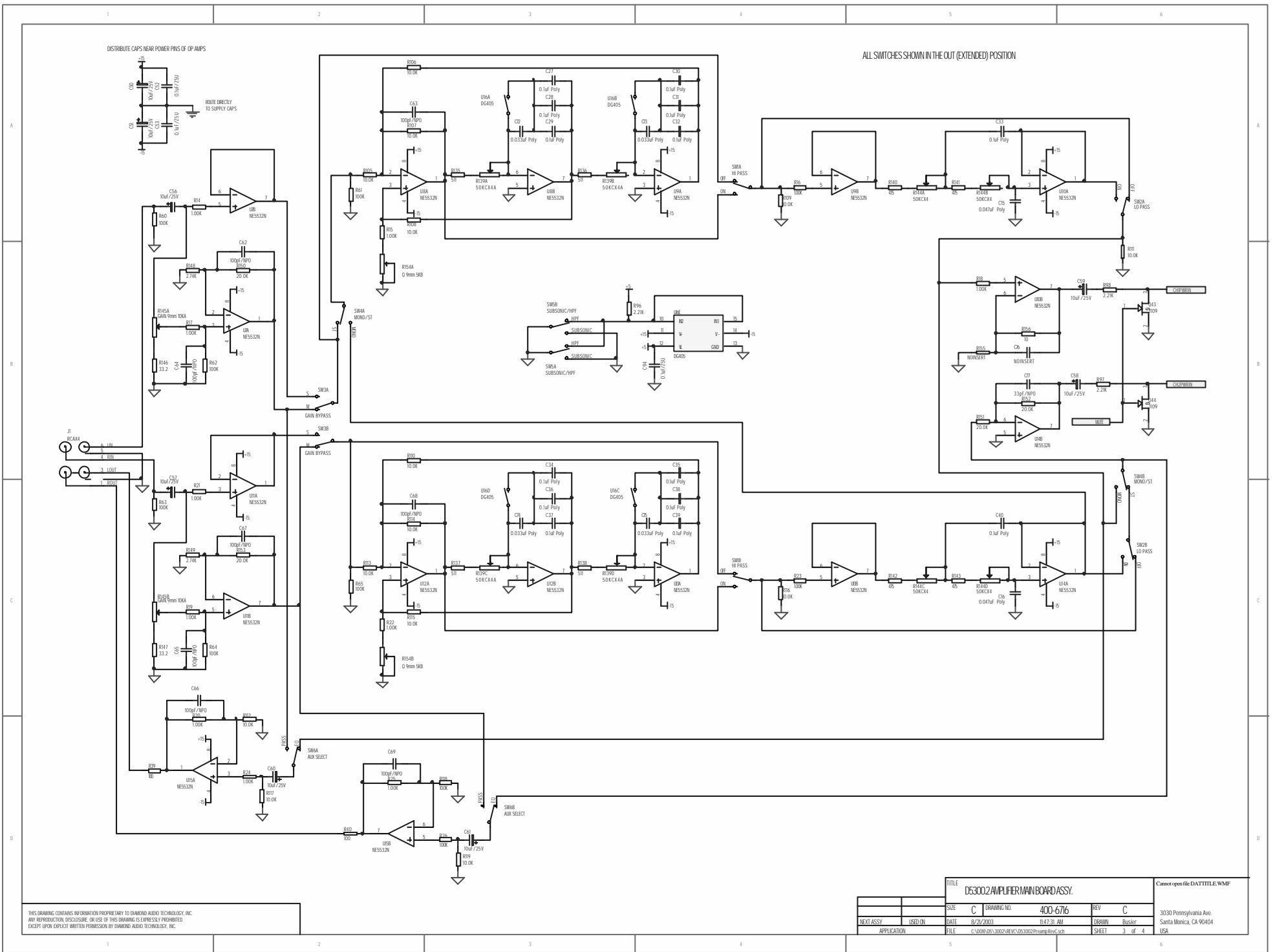


THIS DRAWING CONTAINS INFORMATION PROPRIETARY TO DIAMOND AUDIO TECHNOLOGY, INC.  
 ANY REPRODUCTION, DISCLOSURE, OR USE OF THIS DRAWING IS EXPRESSLY PROHIBITED  
 EXCEPT UPON EXPLICIT WRITTEN PERMISSION BY DIAMOND AUDIO TECHNOLOGY, INC.

TITLE D53002 AMPLIFIER MAIN BOARD ASSY.				Cannot open file G:\CLIENT\Projects\DAT\Forms\DAT TITLE.wmf	
SSE	B	DRAWING NO.	400-6716	REV	C
NEXT ASSY	USED ON	DATE	8/21/2003	TL-47-31AM	DRAWN
APPLICATION	FILE	C:\000\003\3002\001\003\002 Supply Board.mcb		SHEET	2 of 4
					3030 Pennsylvania Ave. Santa Monica, CA 90404 USA

DISTRIBUTE CAPS NEAR POWER PINS OF OP AMPS

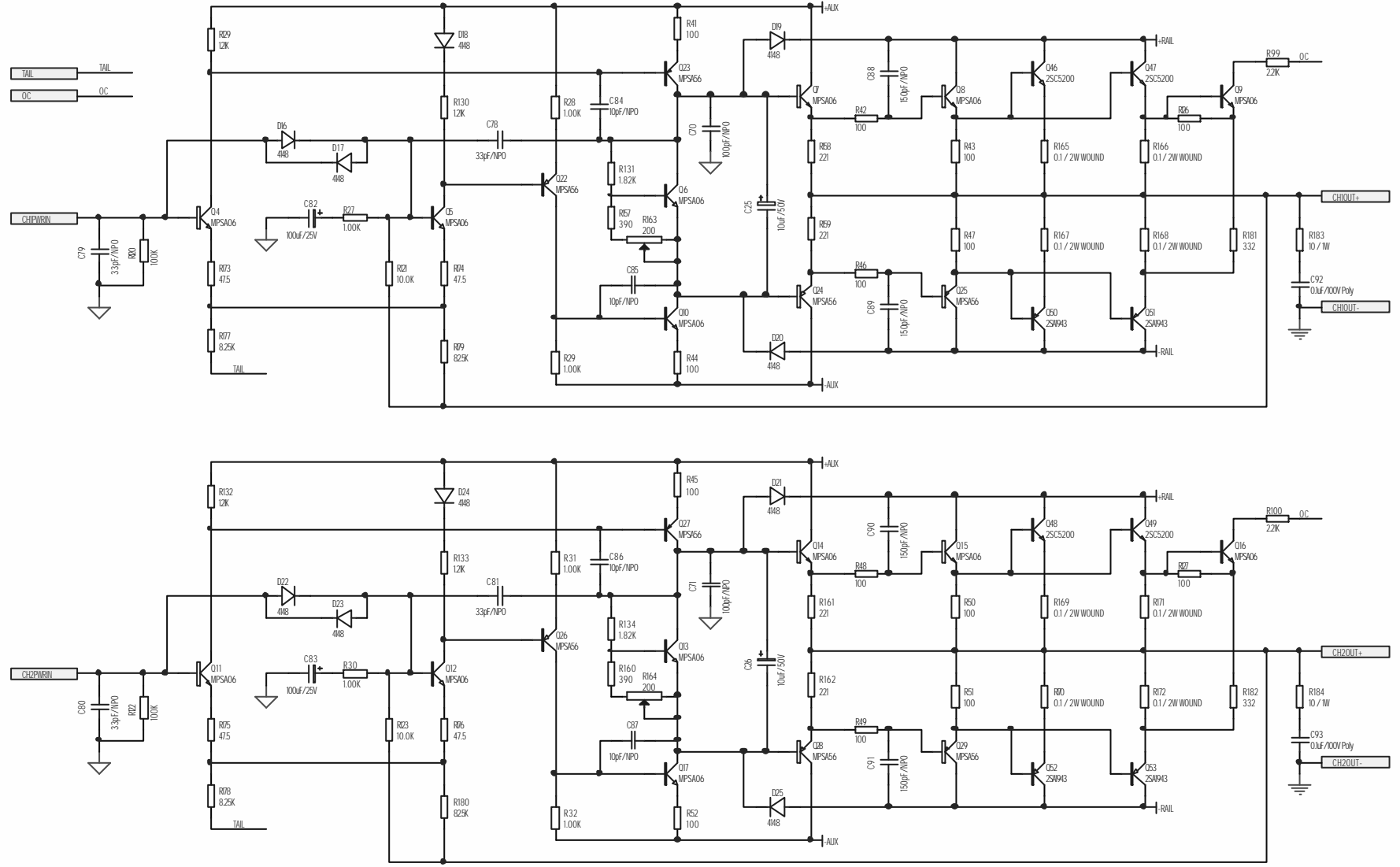
ALL SWITCHES SHOWN IN THE OUT (EXTENDED) POSITION



THIS DRAWING CONTAINS INFORMATION PROPRIETARY TO DAWSON AUDIO TECHNOLOGY, INC.  
 ANY REPRODUCTION, DISCLOSURE, OR USE OF THIS DRAWING IS EXPRESSLY PROHIBITED  
 EXCEPT UPON EXPLICIT WRITTEN PERMISSION BY DAWSON AUDIO TECHNOLOGY, INC.

TITLE		D53002 AMPIFIER MAIN BOARD ASSY.		Cannot open file: DATITLE.WMF	
SIZE	C	DRAWING NO.	400-6716	REV	C
DATE	8/27/2003	TR47-JL AW		DRAWN	Bussart
FILE	C:\WORK\08_13002\U4FC\08_13002\1ramp\tr47.dwg			SHEET	3 of 4

3030 Pennsylvania Ave.  
 Santa Monica, CA 90404  
 USA



THIS DRAWING CONTAINS INFORMATION PROPRIETARY TO DIAMOND AUDIO TECHNOLOGY, INC.  
ANY REPRODUCTION, DISCLOSURE, OR USE OF THIS DRAWING IS EXPRESSLY PROHIBITED  
EXCEPT UPON EXPLICIT WRITTEN PERMISSION BY DIAMOND AUDIO TECHNOLOGY, INC.

TITLE				Cannot open file G:\CLIENT\Projects\DATForms\DAT			
D53002 AMPIFIER MAIN BOARD ASSY. <td colspan="4">TITLE.wmf</td>				TITLE.wmf			
SSE	B	DRAWING NO.	400-6716	REV	C		
NEXT ASSY	USED ON	DATE	8/21/2003	TIME	11:47:32AM		
APPLICATION		FILE	C:\008\003\0003\003\003002 Assy Board.rvt		DRWN	Schwitalla	
				SHEET	4 of 4		
				USA		3030 Pennsylvania Ave. Santa Monica, CA 90404	